



INVITATION TO BID

January 3, 2018

The Little Traverse Bay Bands of Odawa Indians, a federally Recognized Indian Tribe, invites your business to submit a proposal to Expand the Forest Openings at LTBB's Ziibijwang Farm located on Gill Road in Carp Lake.

Included with this letter are:

- 1.) Provisions governing this ITB.
 - a. Provisions included for proposal.
 - b. Attachment 1 – Map of Property
- 2.) For questions regarding bidding procedure or submittals, contact Mandy Szocinski by email at mszocinski@ltbbodawa-nsn.gov or by phone at 231-242-1439.
- 3.) For project specific questions and pre proposal site visits can be arranged by contacting Noah Jansen, the LTBB Conservationist, who can be reached by e-mail - njansen@ltbbodawa-nsn.gov, office - 231-242-1670.

Thank you for your interest.

Sincerely,

Mandy Szocinski

Mandy Szocinski
Accounting

I. BIDS DUE

- A. All bids must be received by Mandy Szocinski in the Accounting Department by **January 12, 2017** no later than 4:00pm prevailing local time. Submittals received after deadline will not be considered.
- B. Bids will be accepted in the following four methods:
 - 1. In person: Accounting Department, 7500 Odawa Circle, Harbor Springs, MI 49740
 - 2. By Fax: 231-242-1449
 - 3. By E-Mail: mszocinski@ltbbodawa-nsn.gov
 - 4. U.S. Mail to: Little Traverse Bay Bands of Odawa Indians
Attn: Mandy Szocinski
7500 Odawa Circle
Harbor Springs, MI 49740
- C. Any questions regarding the bid process may be directed to Mandy Szocinski, at 231-242-1439.
- D. All bids will be reviewed in the Accounting Department, 7500 Odawa Circle, Harbor Springs, Michigan.

II. SCOPE

Little Traverse Bay Band of Odawa Indians (LTBB) Natural Resources Department (NRD) would like to create and/or expand 4 gaps in the forest canopy at the Tribe's property located on Gill Road in Carp Lake Township (Emmet County). The planned gaps range in size from 0.4 to 1.1 acres and are located in existing areas of lower tree density. Gap number 2 (see map- Exhibit A) is about 0.5 acres and has about 30 trees to remove. Gap 3 is 1.1 acres and has about 70 trees to remove. Gap 4 is 0.4 acres and has 50 trees to remove (most 3 to 6-inch diameter). Gap 14 is 1.1 acres and has about 25 trees to remove.

- A. Cut down and remove all flagged trees from the gap areas. Unmarked trees of at least three (3) inches in diameter should remain undamaged.
- B. Branches, tops and trees less than six (6) inches in diameter are to be chipped and left on property.
- C. Trees and log sections six (6) inches or larger in diameter are to be cut into manageable size lengths and stacked into neat piles on site. Stumps to be left.
- D. All work is to be done between January and March 2018 under frozen or dry conditions or use measures to prevent soil compacting and rutting.
- E. To prevent the spread of invasive species, **All** vehicles and equipment must be free of mud and plant material upon entering the property.
- F. LTBB NRD must be notified no less than 24 hours before coming on site for LTBB to evaluate the conditions will be suitable to conduct the planned work.
- G. LTBB NRD Staff shall be onsite to inspect the vehicles and equipment for cleanliness prior to entering the site.
- H. LTBB may temporarily suspend work if NRD Staff determine conditions are not suitable or equipment is not clean.
- I. While desired timeframe is January through March 2018, the timeframe may be extended if suitable conditions do not occur or last for the project to be completed.
- J. Project is subject to Davis Bacon and Related Acts (40 USC §276a; 29 CFR Parts 1, 3, 5, 6 and 7), and Certified Payroll Records must be submitted to LTBB during the project period see Addendum A.

III. QUALIFICATIONS OF CONTRACTOR

- A. Must not appear as listed as parties that are excluded from receiving Federal contracts, certain subcontracts, and certain Federal financial and nonfinancial assistance and benefits, pursuant to the provisions of 31 U.S.C. 6101, note, E.O. 12549, E.O. 12689, 48 CFR 9.404, and each agency's codification of the Common Rule for Nonprocurement suspension and debarment.
- B. **Davis Bacon and Related Acts (DBRA)**. DBRA are administered by the Wage and Hour Division. Contractors and subcontractors performing on federally funded or assisted contracts in, in excess of \$2,000.00 for the construction, alteration or repairs are required to pay their laborers not less than the prevailing wage rates and fringe benefits as determined by Department of Labor (DOL) and listed on the web site (www.dol.gov) under the Wage and Hour Division (WHD) for corresponding classes of laborers employed on similar project in the area and are listed in this contract (Addendum A MI170001 12/15/2017 MII "Davis-

Bacon Wage Determination”) . Apprentices may be employed at less than predetermined rates if they are in an apprenticeship program registered with the DOL or with a state apprenticeship agency recognized by the DOL. Trainees may be employed at less than predetermined rates if they are in a training program certified by the DOL. Contractors and subcontractors on prime contracts in excess \$100,000.00 are required, pursuant to the Contract Work Hours and Safety Standards Act, to pay employees one and one-half times their basic rates of pay for all hours over 40 worked on covered contract work in a workweek. **Covered Contractors and subcontractors are also required to pay employees weekly and to submit weekly certified payroll records to LTBB, the contracting agency, to the LTBB Accounting Office or designee (form wh347).** ([40 USC §276a](#); [29 CFR Parts 1, 3, 5, 6 and 7](#))

- C. The Parties understand that LTBB has enacted a statute, WOS 2012-008, the Sex Offender Registration and Notification Statute, to fulfill the obligations of sex offender registration and notification. All contractors, including their employees including all subcontractors and their employees that are sex offenders that are mandated to register are required to update their registry with the LTBB Law Enforcement when working on sites under the jurisdiction of LTBB.

IV. PREFERENCES FOR CONTRACTOR

- A. Native American Preference shall apply.
1. Citizens of the Little Traverse Bay Bands of Odawa Indians,
 2. Citizens of Other Federally Recognized Tribes, as certified by the Bureau of Indian Affairs
- B. Special consideration shall also be given to firms proven to be minority owned and/or classified as small business, see item 4 of “Bid Package” submittal for documentation needed.

V. INSURANCE REQUIREMENTS

The Contractor must obtain and agree to maintain during the term of the Contract, the following insurance coverage that apply, as required by law. All coverage shall be with insurance companies licensed and admitted to do business in the State of Michigan.

- A. The Contractor shall carry Worker’s Compensation and Employer’s Liability Insurance Coverage.
- B. The Contractor shall be responsible for insuring all its vehicles, equipment, and all materials which it may use during contract period. LTBB shall not be responsible for any loss or damage to the Contractor’s vehicles, equipment, and materials.
- C. The Contractor shall procure and maintain during the term of the contract Professional or Commercial General Liability Insurance on an “occurrence basis” with limits of liability of not less than \$1,000,000 per occurrence combined single limit, for Personal injury, Bodily injury and Property Damage. Coverage shall include the following extensions: 1.) Contractual Liability; 2.) Products and Completed Operations Coverage; 3.) Independent Contractors Coverage; and 4.) Broad Form General Liability Extensions or equivalent.
- D. The Contractor shall maintain Vehicle Liability Coverage and Michigan No-Fault coverage including all owned, non-owned, and hired vehicles, of not less than \$1,000,000 per occurrence combined single limit.
- E. If any of the above coverage expires during the term of the contract, the Contractor’s insurer shall deliver renewal certification and/or policies to: Little Traverse Bay Bands of Odawa Indians, Accounting Contracts Personnel, and 7500 Odawa Circle, Harbor Springs, Michigan 49740.

VI. FUNDING REQUIREMENTS

This project is 100% funded with funds available through Bureau of Indian Affairs Forestry Grant. Contractors submitting bids and awarded this project MUST comply with any special requirements of this grant. Requirements are listed in Section II Scope above. The following are required as Special Terms and Conditions: **Davis Bacon and Related Acts (DBRA) and wage certification.**

VII. CONTRACT AWARD

The LTBB Natural Resources Director, the LTBB Contracts Personnel, and if needed, the Direct Services Administrator will evaluate the bids and make a decision to award the contract to one or more most responsive

bidder(s) having proven experience in services as described above in section II. Native American Preference shall apply.

The award may be split, at the LTBB’s discretion, between two (2) or more contractors to better service specific locations.

LTBB may make a determination that the rejection of all bids is in the best interest of LTBB. LTBB will not pay for any information herein requested, nor is it liable for any costs incurred by the bidder.

BID PACKAGE

Contractors must submit a response in the form of a bid that includes a brief letter, addressed to Mandy Szocinski, with the name, address, telephone number, and email of the contact person who is authorized to commit to the proposal and contract. The bid must include and/or address all of the following:

A. BID

1. Introduction
 - a. Company Profile
 - b. Key staff who will perform the tasks for this project
 - c. List of References
 - d. List and provide contact information for any subcontractors for the project
2. Work Plan – describe in detail the tasks, timeline and deliverables to complete the project as it relates to the Scope of Services. Include equipment and/or technologies to be used. Clearly indicate which tasks will be completed by subcontractors (if applicable).
3. The total fixed cost of the services for each gap as noted in Section II of this invitation and shown on the attached map. There are 4 Gaps listed on the map as #2, 3, 4, and 14 please bid each separately noting them by number.
4. Documentation Required for Preferences Listed in Section IV—All things being equal, the following types of firms would receive special consideration, in the award of this contract:
 - Indian Owned— Indian owned is defined as, at least 51% Indian owned & controlled by person(s) of certified (federally recognized) Native American heritage; SBA or Tribal certification required.
 - Minority Owned— Minority owned is a firm that is at least 51% owned and controlled by a minority and so documented; SBA 8-a certification required.
 - Small Business— Small business for this purpose is firm doing less than \$2 million annually as verified by gross receipts, SBA certification required.
5. A copy of the Certificates of Insurance for the Contract term as noted in Section V of this invitation.

Addendum A

General Decision Number: MI170001 12/15/2017 MI1

Superseded General Decision Number: MI20160001

State: Michigan

Construction Types: Highway (Highway, Airport & Bridge xxxxx and Sewer/Incid. to Hwy.)

Counties: Michigan Statewide.

Note: Under Executive Order (EO) 13658, an hourly minimum wage of \$10.20 for calendar year 2017 applies to all contracts subject to the Davis-Bacon Act for which the contract is awarded (and any solicitation was issued) on or after January 1, 2015. If this contract is covered by the EO, the contractor must pay all workers in any classification listed on this wage determination at least \$10.20 (or the applicable wage rate listed on this wage determination, if it is higher) for all hours spent performing on the contract in calendar year 2017. The EO minimum wage rate will be adjusted annually. Additional information on contractor requirements and worker protections under the EO is available at www.dol.gov/whd/govcontracts.

Modification Number Publication Date

| | | | | | | | |
|---|------------|---|------------|----|------------|----|------------|
| 0 | 01/06/2017 | 5 | 06/02/2017 | 9 | 07/28/2017 | 13 | 11/10/2017 |
| 1 | 02/03/2017 | 6 | 06/23/2017 | 10 | 09/08/2017 | 14 | 11/24/2017 |
| 2 | 02/17/2017 | 7 | 06/30/2017 | 11 | 09/22/2017 | 15 | 12/01/2017 |
| 3 | 04/28/2017 | 8 | 07/21/2017 | 12 | 11/03/2017 | 16 | 12/15/2017 |
| 4 | 05/19/2017 | | | | | | |

CARP0004-004 06/01/2016

| | | |
|------------------------------|----------|---------|
| REMAINDER OF STATE | Rates | Fringes |
| CARPENTER (Piledriver)..... | \$ 26.33 | 19.18 |

CARP0004-005 06/01/2016

| | | |
|---|----------|---------|
| Livingston (Townships of Brighton, Deerfield, Genoa, Hartland, Oceola & Tyrone), Macomb, Monroe, Oakland, Sanilac, St. Clair and Wayne Counties | Rates | Fringes |
| CARPENTER (Piledriver)..... | \$ 29.47 | 25.94 |

ELEC0017-005 06/05/2017

STATEWIDE

| | | | |
|---|----------|------------|--|
| Line Construction | Rates | Fringes | |
| Groundman/Driver..... | \$ 28.16 | 6.10+28.5% | |
| Journeyman Signal Tech, Communications Tech, Tower Tech & Fiber Optic Splicers. | \$ 38.38 | 6.10+28.5% | |
| Journeyman Specialist..... | \$ 44.14 | 6.10+28.5% | |
| Operator A..... | \$ 32.45 | 6.10+28.5% | |
| Operator B..... | \$ 30.30 | 6.10+28.5% | |

Classifications

- Journeyman Specialist: Refers to a crew of only one person working alone.
- Operator A: Shall be proficient in operating all power equipment including: Backhoe, Excavator, Directional Bore and Boom/Digger truck.
- Operator B: Shall be proficient in operating any 2 of the above mentioned pieces of equipment listed under Operator A.

ENGI0324-003 06/01/2017

Alcona, Alpena, Arenac, Bay, Cheboygan, Clare, Clinton, Crawford, Genesee, Gladwin, Gratiot, Huron, Ingham, Iosco, Isabella, Jackson, Lapeer, Lenawee, Livingston, Macomb, Midland, Monroe, Montmorency, Oakland, Ogemaw, Oscoda, Otsego, Presque Isle, Roscommon, Saginaw, St. Clair, Sanilac, Shiawassee, Tuscola, Washtenaw And Wayne Counties:
 OPERATOR: Power Equipment (Steel Erection)

| | | | | | |
|--------------|----------|---------|---------------|----------|---------|
| | Rates | Fringes | | Rates | Fringes |
| GROUP 1..... | \$ 44.32 | 23.00 | GROUP 10..... | \$ 41.60 | 23.00 |
| GROUP 2..... | \$ 45.32 | 23.00 | GROUP 11..... | \$ 39.87 | 23.00 |
| GROUP 3..... | \$ 42.82 | 23.00 | GROUP 12..... | \$ 40.87 | 23.00 |
| GROUP 4..... | \$ 43.82 | 23.00 | GROUP 13..... | \$ 39.51 | 23.00 |
| GROUP 5..... | \$ 41.32 | 23.00 | GROUP 14..... | \$ 40.51 | 23.00 |
| GROUP 6..... | \$ 42.32 | 23.00 | GROUP 15..... | \$ 38.87 | 23.00 |
| GROUP 7..... | \$ 41.05 | 23.00 | GROUP 16..... | \$ 37.17 | 23.00 |
| GROUP 8..... | \$ 42.05 | 23.00 | GROUP 17..... | \$ 32.06 | 23.00 |
| GROUP 9..... | \$ 40.60 | 23.00 | GROUP 18..... | \$ 30.65 | 23.00 |

FOOTNOTE:

Paid Holidays: New Year's Day, Memorial Day, Fourth of July, Labor Day, Thanksgiving Day and Christmas Day.

POWER EQUIPMENT OPERATOR CLASSIFICATIONS

- GROUP 1: Engineer when operating combination of boom and jib 400' or longer
- GROUP 2: Engineer when operating combination of boom and jib 400' or longer on a crane that requires an oiler
- GROUP 3: Engineer when operating combination of boom and jib 300' or longer
- GROUP 4: Engineer when operating combination of boom and jib 300' or longer on a crane that requires an oiler
- GROUP 5: Engineer when operating combination of boom and jib 220' or longer
- GROUP 6: Engineer when operating combination of boom and jib 220' or longer on a crane that requires an oiler
- GROUP 7: Engineer when operating combination of boom and jib 140' or longer
- GROUP 8: Engineer when operating combination of boom and jib 140' or longer on a crane that requires an oiler
- GROUP 9: Tower crane & derrick operator (where operator's work station is 50 ft. or more above first sub-level)
- GROUP 10: Tower crane & derrick operator (where operator's work station is 50 ft. or more above first sub-level) on a crane that requires an oiler
- GROUP 11: Engineer when operating combination of boom and jib 120' or longer
- GROUP 12: Engineer when operating combination of boom and jib 120' or longer on a crane that requires an oiler
- GROUP 13: Crane operator; job mechanic and 3 drum hoist and excavator
- GROUP 14: Crane operator on a crane that requires an oiler
- GROUP 15: Hoisting operator; 2 drum hoist and rubber tired backhoe
- GROUP 16: Forklift and 1 drum hoist

GROUP 17: Compressor or welder operator

GROUP 18: Oiler

ENGI0324-004 06/01/2017

AREA 1: Allegan, Barry, Berrien, Branch, Calhoun, Cass, Eaton, Hillsdale, Ionia, Kalamazoo, Kent, Lake, Manistee, Mason, Mecosta, Montcalm, Muskegon, Newaygo, Oceana, Osceola, Ottawa, St. Joseph, Van Buren

AREA 2: Antrim, Benzie, Charlevoix, Emmet, Grand Traverse, Kalkaska, Leelanau, Missaukee And Wexford Counties:

OPERATOR: Power Equipment (Steel Erection)

| AREA 1 | Rates | Fringes | AREA 2 | Rates | Fringes |
|--------------|----------|---------|--------------|----------|---------|
| GROUP 1..... | \$ 44.32 | 23.00 | GROUP 1..... | \$ 44.32 | 23.00 |
| GROUP 2..... | \$ 41.05 | 23.00 | GROUP 2..... | \$ 41.05 | 23.00 |
| GROUP 3..... | \$ 39.51 | 23.00 | GROUP 3..... | \$ 39.51 | 23.00 |
| GROUP 4..... | \$ 37.17 | 23.00 | GROUP 4..... | \$ 37.17 | 23.00 |
| GROUP 5..... | \$ 32.06 | 23.00 | GROUP 5..... | \$ 32.06 | 23.00 |
| GROUP 6..... | \$ 30.65 | 23.00 | GROUP 6..... | \$ 30.65 | 23.00 |

FOOTNOTES:

Crane operator with main boom and jib 300' or longer: \$1.50 additional to the group 1 rate. Crane operator with main boom and jib 400' or longer: \$3.00 additional to the group 1 rate.

PAID HOLIDAYS: New Year's Day, Memorial Day, Fourth of July, Labor Day, Thanksgiving Day and Christmas Day.

POWER EQUIPMENT OPERATOR CLASSIFICATIONS:

GROUP 1: Crane Operator with main boom & jib 400', 300', or 220' or longer.

GROUP 2: Crane Operator with main boom & jib 140' or longer, Tower Crane; Gantry Crane; Whirley Derrick.

GROUP 3: Regular Equipment Operator, Crane, Dozer, Loader, Hoist, Straddle Wagon, Mechanic, Grader and Hydro Excavator.

GROUP 4: Air Tugger (single drum), Material Hoist Pump 6" or over, Elevators, Brokk Concrete Breaker.

GROUP 5: Air Compressor, Welder, Generators, Conveyors

GROUP 6: Oiler and fire tender

ENGI0324-005 09/01/2017

AREA 1: Genesee, Lapeer, Livingston, Macomb, Monroe, Oakland, St. Clair, Washtenaw And Wayne Counties

AREA 2: Alcona, Allegan, Alger, Alpena, Antrim, Arenac, Baraga, Barry, Bay, Benzie, Berrien, Branch, Calhoun, Cass, Charlevoix, Cheboygan, Chippewa, Clare, Clinton, Crawford, Delta, Dickinson, Eaton, Emmet, Gladwin, Gogebic, Grand

Traverse, Gratiot, Hillsdale, Houghton, Huron, Ingham, Ionia, Iosco, Iron, Isabella, Jackson, Kalamazoo, Kalkaska, Kent, Kweenaw, Lake, Leelanau, Lenawee, Luce, Mackinac, Manistee, Marquette, Mason, Mecosta, Menominee, Midland,

Missaukee, Montcalm, Montmorency, Muskegon, Newaygo, Oceana, Ogemaw, Ontonagon, Osceola, Oscoda, Otsego,

Ottawa, Presque Isle, Roscommon, Saginaw, Sanilac, Schoolcraft, Shiawassee, St. Joseph, Tuscola, Van Buren And Wexford Counties

OPERATOR: Power Equipment (Underground construction (including sewer))

| AREA 1: | Rates | Fringes | AREA 2: | Rates | Fringes |
|--------------|----------|---------|--------------|----------|---------|
| GROUP 1..... | \$ 32.03 | 23.35 | GROUP 1..... | \$ 30.32 | 23.35 |
| GROUP 2..... | \$ 27.30 | 23.35 | GROUP 2..... | \$ 25.43 | 23.35 |
| GROUP 3..... | \$ 26.57 | 23.35 | GROUP 3..... | \$ 24.93 | 23.35 |
| GROUP 4..... | \$ 26.00 | 23.35 | GROUP 4..... | \$ 24.65 | 23.35 |

POWER EQUIPMENT OPERATOR CLASSIFICATIONS

GROUP 1: Backfiller tamper; Backhoe; Batch plant operator (concrete); Clamshell; Concrete paver (2 drums or larger); Conveyor loader (Euclid type); Crane (crawler, truck type or pile driving); Dozer; Dragline; Elevating grader; Endloader; Gradall (and similar type machine); Grader; Mechanic; Power shovel; Roller (asphalt); Scraper

(self-propelled or tractor drawn); Side boom tractor (type D-4 or equivalent and larger); Slip form paver; Slope paver; Trencher (over 8 ft. digging capacity); Well drilling rig; Concrete pump with boom operator; Hydro Excavator

GROUP 2: Boom truck (power swing type boom); Crusher; Hoist; Pump (1 or more - 6-in. discharge or larger - gas or diesel-powered or powered by generator of 300 amperes or more - inclusive of generator); Side boom tractor (smaller than type D-4 or equivalent); Tractor (pneu-tired, other than backhoe or front end loader); Trencher (8-ft. digging capacity and smaller); Vac Truck

GROUP 3: Air compressors (600 cfm or larger); Air compressors (2 or more-less than 600 cfm); Boom truck (non-swinging, non-powered type boom); Concrete breaker (self-propelled or truck mounted - includes compressor); Concrete paver (1 drum-1/2 yd. or larger); Elevator (other than passenger); Maintenance person; Pump (2 or more-4-in. up to 6-in. discharge-gas or diesel powered - excluding submersible pumps); Pumpcrete machine (and similar equipment); Wagon drill (multiple);

Welding machine or generator (2 or more-300 amp. or larger - gas or diesel powered)

GROUP 4: Boiler; Concrete saw (40 hp or over); Curing machine (self-propelled); Farm tractor (with attachment); Finishing machine (concrete); Fire person; Hydraulic pipe pushing machine; Mulching equipment; Oiler; Pumps (2 or more up to 4-in.

discharge, if used 3 hours or more a day, gas or diesel powered - excluding submersible pumps); Roller (other than asphalt); Stump remover; Trencher (service); Vibrating compaction equipment, self-propelled (6 ft. wide or over); End dump operator; Sweeper (Wayne type); Water wagon and Extend-a boom forklift

 ENGI0324-006 06/01/2017

Area 1: Genesee, Macomb, Monroe, Oakland, Washtenaw And Wayne Counties

Area 2: Alcona, Alger, Allegan, Alpena, Antrim, Arenac, Baraga, Barry, Bay, Benzie, Berrien, Branch, Calhoun, Cass, Charlevoix, Cheboygan, Chippewa, Clare, Clinton, Crawford, Delta, Dickinson, Eaton, Emmet, Gladwin, Gogebic, Grand Traverse, Gratiot, Hillsdale, Houghton, Huron, Ingham, Ionia, Iosco, Iron, Isabella, Jackson, Kalamazoo, Kalkaska, Kent, Keweenaw, Lake, Lapeer, Leelanau, Lenawee, Livingston, Luce, Mackinac, Manistee, Marquette, Mason, Mecosta, Menominee, Midland, Missaukee, Montcalm, Montmorency, Muskegon, Newaygo, Oceana, Ogemaw, Ontonagon, Osceola, Oscoda, Otsego, Ottawa, Presque Isle, Roscommon, Saginaw, St. Clare, St. Joseph, Sanilac, Schoolcraft, Shiawassee, Tuscola, Van Buren And Wexford Counties

Power equipment operators: (Airport, Bridge & Highway Construction)

| AREA 1 | Rates | Fringes | AREA 2 | Rates | Fringes |
|--------------|----------|---------|--------------|----------|---------|
| GROUP 1..... | \$ 32.16 | 23.35 | GROUP 1..... | \$ 32.16 | 23.35 |
| GROUP 2..... | \$ 25.43 | 23.35 | GROUP 2..... | \$ 25.28 | 23.35 |
| GROUP 3..... | \$ 26.73 | 23.35 | GROUP 3..... | \$ 26.58 | 23.35 |
| GROUP 4..... | \$ 24.87 | 23.35 | GROUP 4..... | \$ 24.72 | 23.35 |
| GROUP 5..... | \$ 24.70 | 23.35 | GROUP 5..... | \$ 24.40 | 23.35 |

POWER EQUIPMENT OPERATOR CLASSIFICATIONS

GROUP 1: Asphalt plant operator; Crane operator (does not include work on bridge construction projects when the crane operator is erecting structural components); Dragline operator; Shovel operator; Locomotive operator; Paver operator (5 bags or more); Elevating grader operator; Pile driving operator; Roller operator (asphalt); Blade grader operator; Trenching machine operator (ladder or wheel type); Auto-grader; Slip form paver; Self-propelled or tractor-drawn scraper; Conveyor loader operator (Euclid type); Endloader operator (1 yd. capacity and over); Bulldozer; Hoisting engineer; Tractor operator; Finishing machine operator (asphalt); Mechanic; Pump operator (6-in. discharge or over, gas, diesel powered or generator of 300 amp. or larger); Shouldering or gravel distributing machine operator (self-propelled); Backhoe (with over 3/8 yd. bucket); Side boom tractor (type D-4 or equivalent or larger); Tube finisher (slip form paving); Gradall (and similar type machine); Asphalt paver (self-propelled); Asphalt planer (self-propelled); Batch plant (concrete-central mix); Slurry machine (asphalt); Concrete pump (3 in. and over); Roto-mill; Swinging boom truck (over 12 ton capacity); Hydro demolisher (water blaster); Farm-type tractor with attached pan

GROUP 2: Screening plant operator; Washing plant operator; Crusher operator; Backhoe (with 3/8 yd. bucket or less); Side boom tractor (smaller than D-4 type or equivalent); Sweeper (Wayne type and similar equipment); Vacuum truck operator; Batch plant (concrete dry batch)

GROUP 3: Grease Truck

GROUP 4: Air compressor operator (600 cu. ft. per min or more); Air compressor operator (two or more, less than 600 cfm); Wagon drill operator; Concrete breaker; Tractor operator (farm type with attachment)

GROUP 5: Boiler fire tender; Oiler; Fire tender; Trencher (service); Flexplane operator; Cleftplane operator; Grader operator (self-propelled fine-grade or form (concrete)); Finishing machine operator (concrete); Boom or winch hoist truck operator; Endloader operator (under 1 yd. capacity); Roller operator (other than asphalt); Curing equipment operator (self-propelled); Concrete saw operator (40 h.p. or over); Power bin operator; Plant drier operator (asphalt); Vibratory compaction equipment operator (6 ft. wide or over); Guard post driver operator (power driven); All mulching equipment; Stump remover; Concrete pump (under 3-in.); Mesh installer (self-propelled); Tractor operator (farm type); End dump; Skid steer

 ENGI0324-007 05/01/2017

Alger, Baraga, Chippewa, Delta, Dickinson, Gogebic, Houghton, Iron, Keweenaw, Luce, Mackinac Marquette, Menominee, Ontonagon And Schoolcraft Counties:

| OPERATOR: Power Equipment (Steel Erection) | Rates | Fringes |
|---|----------|---------|
| Compressor, welder and forklift..... | \$ 25.71 | 23.05 |
| Crane operator, main boom & jib 120' or longer..... | \$ 29.46 | 23.05 |
| Crane operator, main boom & jib 140' or longer..... | \$ 29.71 | 23.05 |
| Crane operator, main boom & jib 220' or longer..... | \$ 29.96 | 23.05 |
| Mechanic with truck and tools..... | \$ 30.46 | 23.05 |
| Oiler and fireman..... | \$ 24.41 | 23.05 |
| Regular operator..... | \$ 28.96 | 23.05 |

ENGI0324-008 10/01/2015

Alcona, Alger, Allegan, Alpena, Antrim, Arenac, Baraga, Barry, Bay, Benzie, Berrien, Branch, Calhoun, Cass, Charlevoix, Cheboygan, Chippewa, Clare, Clinton, Crawford, Delta, Dickinson, Eaton, Emmet, Genesee, Gladwin, Gogebic, Grand Traverse, Gratiot, Hillsdale, Houghton, Huron, Ingham, Ionia, Iosco, Iron, Isabella, Jackson, Kalamazoo, Kalkaska, Kent, Keweenaw, Lake, Lapeer, Leelanau, Lenawee, Livingston, Luce, Mackinac, Macomb, Manistee, Marquette, Mason, Mecosta, Menominee, Midland, Missaukee, Montcalm, Montmorency, Monroe, Muskegon, Newaygo, Oakland, Oceana, Ogemaw, Ontonagon, Osceola, Oscoda, Otsego, Ottawa, Presque Isle, Roscommon, Saginaw, St. Clare, St. Joseph, Sanilac, Schoolcraft, Shiawassee, Tuscola, Van Buren, Washtenaw, Wayne And Wexford Counties

| | | |
|--|----------|---------|
| OPERATOR: Power Equipment (Sewer Relining) | Rates | Fringes |
| GROUP 1..... | \$ 30.70 | 12.93 |
| GROUP 2..... | \$ 29.17 | 12.93 |

SEWER RELINING CLASSIFICATIONS

GROUP 1: Operation of audio-visual closed circuit TV system, including remote in-ground cutter and other equipment used in connection with the CCTV system

GROUP 2: Operation of hot water heaters and circulation systems, water jetters and vacuum and mechanical debris removal systems

ENGI0325-012 05/01/2017

AREA 1: Macomb, Monroe, Oakland, St. Clair, Washtenaw And Wayne Counties

AREA 2: Alcona, Alger, Allegan, Alpena, Antrim, Arenac, Baraga, Barry, Bay, Benzie, Berrien, Branch, Calhoun, Cass, Charlevoix, Cheboygan, Chippewa, Clare, Clinton, Crawford, Delta, Dickinson, Eaton, Emmet, Genesee, Gladwin, Gogebic, Grand Traverse, Gratiot, Hillsdale, Houghton, Huron, Ingham, Ionia, Iosco, Iron, Isabella, Jackson, Kalamazoo, Kalkaska, Kent, Keweenaw, Lake, Lapeer, Leelanau, Lenawee, Livingston Luce, Mackinac, Manistee, Marquette, Mason, Mecosta, Menominee, Midland, Missaukee, Montcalm, Montmorency, Muskegon, Newaygo, Oceana, Ogemaw, Ontonagon, Osceola, Oscoda, Otsego, Ottawa, Presque Isle, Roscommon, Saginaw, St. Joseph, Sanilac, Schoolcraft, Shiawassee, Tuscola, Van Buren And Wexford Counties

Power equipment operators - gas distribution and duct installation work:

| AREA 1 | Rates | Fringes | AREA 2 | Rates | Fringes |
|--------------|----------|---------|----------------|----------|---------|
| GROUP 1..... | \$ 29.73 | 23.30 | GROUP 1..... | \$ 28.82 | 23.30 |
| GROUP 2..... | \$ 29.60 | 23.30 | GROUP 2-A..... | \$ 28.72 | 23.30 |
| GROUP 3..... | \$ 28.48 | 23.30 | GROUP 2-B..... | \$ 28.50 | 23.30 |
| GROUP 4..... | \$ 27.90 | 23.30 | GROUP 3..... | \$ 27.72 | 23.30 |
| | | | GROUP 4..... | \$ 27.22 | 23.30 |

SCOPE OF WORK: The construction, installation, treating and reconditioning of pipelines transporting gas vapors within cities, towns, subdivisions, suburban areas, or within private property boundaries, up to and including private meter settings of private industrial, governmental or other premises, more commonly referred to as "distribution work," starting from the first metering station, connection, similar or related facility, of the main or cross country pipeline and including duct installation.

AREA 1:

GROUP 1: Backhoe, crane, grader, mechanic, dozer (D-6 equivalent or larger), side boom (D-4 equivalent or larger), trencher (except service), endloader (2 yd. capacity or greater).

GROUP 2: Dozer (less than D-6 equivalent), endloader (under 2 yd. capacity), side boom (under D-4 capacity), backfiller, pumps (1 or 2 of 6-inch discharge or greater), boom truck (with powered boom), tractor (wheel type other than backhoe or front endloader).

GROUP 3: Tamper (self-propelled), boom truck (with non-powered boom), concrete saw (20 hp or larger), pumps (2 to 4 under 6-inch discharge), compressor (2 or more or when one is used continuously into the second day) and trencher (service).

GROUP 4: Oiler, hydraulic pipe pushing machine, grease person and hydrostatic testing operator.

AREA 2:

GROUP 1: Mechanic, crane (over 1/2 yd. capacity), backhoe (over 1/2 yd. capacity), grader (Caterpillar 12 equivalent or larger)

GROUP 2-A: Trencher (except service), backhoe (1/2 yd. capacity or less)

GROUP 2-B: Crane (1/2 yd. capacity or less), compressor (2 or more), dozer (D-4 equivalent or larger), endloader (1 yd. capacity or larger), pump (1 or 2 six-inch or larger), side boom (D-4 equivalent or larger)

GROUP 3: Backfiller, boom truck (powered), concrete saw (20 hp or larger), dozer (less than D-4 equivalent), endloader (under 1 yd. capacity), farm tractor (with attachments), pump (2 - 4 under six-inch capacity), side boom tractor (less than D-4 equivalent), tamper (self-propelled), trencher service and grader maintenance

GROUP 4: Oiler, grease person and hydrostatic testing operator

* IRON0008-007 06/01/2017

Alger, Baraga, Chippewa, Delta, Dickinson, Gogebic, Houghton, Iron, Keweenaw, Luce, Mackinac Marquette, Menominee, Ontonagon and Schoolcraft Counties:

| | Rates | Fringes |
|---|----------|---------|
| Ironworker - pre-engineered metal building erector..... | \$ 23.70 | 6.95 |

IRONWORKER

| | | |
|--|----------|-------|
| General contracts \$10,000,000 or greater..... | \$ 30.17 | 26.40 |
| General contracts less than \$10,000,000..... | \$ 30.17 | 26.40 |

Paid Holidays: New Year's Day, Memorial Day, July 4th, Labor Day, Thanksgiving Day & Christmas Day.

* IRON0025-002 06/01/2017

Alcona, Alpena, Arenac, Bay, Cheboygan, Clare, Clinton, Crawford, Genesee, Gladwin, Gratiot, Huron, Ingham, Iosco, Isabella, Jackson, Lapeer, Livingston, Macomb, Midland, Montmorency, Oakland, Ogemaw, Oscoda, Otsego, Presque Isle, Roscommon, Saginaw, Sanilac, Shiawassee, St. Clair, Tuscola, Washtenaw and Wayne Counties:

| | Rates | Fringes |
|--|----------|---------|
| Ironworker - pre-engineered metal building erector | | |
| Alcona, Alpena, Arenac, Cheboygan, Clare, Clinton, Crawford, Gladwin, Gratiot, Huron, Ingham, Iosco, Isabella, Jackson, Lapeer, Livingston (west of Burkhardt Road), Montmorency, Ogemaw, Oscoda, Otsego, Presque Isle, Roscommon, Sanilac, Shiawassee, Tuscola & Washtenaw (west of U.S. 23)..... | \$ 22.17 | 20.13 |
| Bay, Genesee, Lapeer, Livingston (east of Burkhardt Road), Macomb, Midland, Oakland, Saginaw, St. Clair, The University of Michigan, Washtenaw (east of U.S. 23) & Wayne..... | \$ 23.39 | 21.13 |

IRONWORKER Rates Fringes

| | |
|--------------------------------------|-------|
| Ornamental and Structural...\$ 29.99 | 33.43 |
| Reinforcing.....\$ 26.57 | 26.90 |

IRON0055-005 07/01/2017

Lenawee and Monroe Counties:

| | Rates | Fringes |
|-------------------------------------|----------|---------|
| IRONWORKER | | |
| Pre-engineered metal buildings..... | \$ 23.59 | 19.35 |
| All other work..... | \$ 29.77 | 21.30 |

IRON0292-003 06/01/2017

Berrien and Cass Counties:

| | Rates | Fringes |
|---|----------|---------|
| IRONWORKER (Including pre-engineered metal building erector)..... | \$ 29.30 | 20.96 |

IRON0340-001 06/19/2017

Allegan, Antrim, Barry, Benzie, Branch, Calhoun, Charlevoix, Eaton, Emmet, Grand Traverse, Hillsdale, Ionia, Kalamazoo, Kalkaska, Kent, Lake, Leelanau, Manistee, Mason, Mecosta, Missaukee, Montcalm, Muskegon, Newaygo, Oceana, Osceola, Ottawa, St. Joseph, Van Buren And Wexford Counties:

| | Rates | Fringes |
|---|----------|---------|
| IRONWORKER (Including pre-engineered metal building erector)..... | \$ 24.43 | 24.67 |

LABO0005-006 10/01/2017

Laborers - hazardous waste abatement: (Alcona, Alpena, Antrim, Benzie, Charlevoix, Cheboygan, Crawford, Emmet, Grand Traverse, Iosco, Kalamazoo, Leelanau, Missaukee, Montmorency, Oscoda, Otsego, Presque Isle

And Wexford Counties – Zone 10) Rates Fringes

| | | |
|-----------------------|----------|-------|
| Levels A, B or C..... | \$ 17.45 | 12.75 |
| class b..... | \$ 18.00 | 12.85 |

Work performed in conjunction with site preparation not requiring the use of personal protective equipment;

| | | |
|--------------------|----------|-------|
| Also, Level D..... | \$ 16.45 | 12.75 |
| class a..... | \$ 17.00 | 12.85 |

Zone 10

Laborers - hazardous waste abatement: (Alger, Baraga, Chippewa, Delta, Dickinson, Gogebic, Houghton, Iron, Keweenaw, Luce, Mackinac, Marquette, Menominee, Ontonagon And Schoolcraft Counties - Zone 11)

| | | |
|-----------------------|----------|-------|
| Levels A, B or C..... | \$ 21.63 | 12.88 |
|-----------------------|----------|-------|

Work performed in conjunction with site preparation not requiring the use of personal protective equipment;

| | | |
|--------------------|----------|-------|
| Also, Level D..... | \$ 20.63 | 12.88 |
|--------------------|----------|-------|

Laborers - hazardous waste abatement: (Allegan, Barry, Berrien, Branch, Calhoun, Cass, Ionia County (except the city of Portland) ; Kalamazoo, Kent, Lake, Manistee, Mason, Mecosta, Montcalm, Muskegon, Newaygo, Oceana, Osceola, Ottawa, St. Joseph And Van Buren Counties - Zone 9)

| | | |
|-----------------------|----------|-------|
| Levels A, B or C..... | \$ 20.95 | 12.85 |
|-----------------------|----------|-------|

Work performed in conjunction with site preparation not requiring the use of personal protective equipment;
 Also, Level D.....\$ 19.95 12.85

Laborers - hazardous waste abatement: (Arenac, Bay, Clare, Gladwin, Gratiot, Huron, Isabella, Midland, Ogemaw, Roscommon, Saginaw and Tuscola Counties - Zone 8)
 Levels A, B or C.....\$ 20.65 12.85
 Work performed in conjunction with site preparation not requiring the use of personal protective equipment;
 Also, Level D.....\$ 19.65 12.85

Laborers - hazardous waste abatement: (Clinton, Eaton and Ingham Counties; Ionia County (City Of Portland); Livingston County (west of Oak Grove Rd., including the City of Howell) - Zone 6)
 Levels A, B or C.....\$ 24.65 12.85
 Work performed in conjunction with site preparation not requiring the use of personal protective equipment;
 Also, Level D.....\$ 23.65 12.85

Laborers - hazardous waste abatement: (Genesee, Lapeer and Shiawassee Counties - Zone 7)
 Levels A, B or C.....\$ 23.61 13.41
 Work performed in conjunction with site preparation not requiring the use of personal protective equipment;
 Also, Level D.....\$ 22.61 13.41

Laborers - hazardous waste abatement: (Hillsdale, Jackson And Lenawee Counties - Zone 4)
 Levels A, B or C.....\$ 24.19 12.85
 Work performed in conjunction with site preparation not requiring the use of personal protective equipment;
 Also, Level D.....\$ 23.19 12.85

Laborers - hazardous waste abatement: (Livingston County (east of Oak Grove Rd. and south of M-59, excluding the city of Howell); and Washtenaw County - Zone 3)
 Levels A, B or C.....\$ 25.50 18.40
 Work performed in conjunction with site preparation not requiring the use of personal protective equipment;
 Also, Level D.....\$ 24.50 18.40

Laborers - hazardous waste abatement: (Macomb And Wayne Counties - Zone 1)
 Levels A, B or C.....\$ 25.35 20.25
 Work performed in conjunction with site preparation not requiring the use of personal protective equipment;
 Also, Level D.....\$ 24.35 20.25

Laborers - hazardous waste abatement: (Monroe County - Zone 4)
 Levels A, B or C.....\$ 26.44 18.85
 Work performed in conjunction with site preparation not requiring the use of personal protective equipment;
 Also, Level D.....\$ 25.44 18.85

Laborers - hazardous waste abatement: (Oakland County and the Northeast portion of Livingston County bordered by Oak Grove Road on the West and M-59 on the South - Zone 2)
 Level A, B, C.....\$ 25.35 20.25
 Work performed in conjunction with site preparation not requiring the use of personal protective equipment;
 Also, Level D.....\$ 24.35 20.25

Laborers - hazardous waste abatement: (Sanilac And St. Clair Counties - Zone 5)
 Levels A, B or C.....\$ 25.19 15.86
 Work performed in conjunction with site preparation not requiring the use of personal protective equipment;
 Also, Level D.....\$ 24.19 15.86

 LABO0259-001 09/01/2017

Area 1: Macomb, Oakland And Wayne Counties

Area 2: Alcona, Alger, Allegan, Alpena, Antrim, Arenac, Baraga, Barry, Bay, Benzie, Berrien, Branch, Calhoun, Cass, Charlevoix, Cheboygan, Chippewa, Clare, Clinton, Crawford, Delta, Dickinson, Eaton, Emmet, Genesee, Gladwin, Gogebic, Grand Traverse, Gratiot, Hillsdale, Houghton, Huron, Ingham, Ionia, Iosco, Iron, Isabella, Jackson, Kalamazoo, Kalkaska, Kent, Keweenaw, Lake, Lapeer, Leelanau, Lenawee, Livingston, Luce, Mackinac, Manistee, Marquette, Mason, Mecosta, Menominee, Midland, Missaukee, Monroe, Montcalm, Montmorency, Muskegon, Newaygo, Oceana, Ogemaw, Ontonagon, Osceola, Oscoda, Otsego, Ottawa, Presque Isle, Roscommon, Saginaw, St. Clare, St. Joseph, Sanilac, Schoolcraft, Shiawassee, Tuscola, Van Buren, Washtenaw And Wexford Counties

Laborers - tunnel, shaft and caisson:

| AREA 1 | Rates | Fringes |
|--------------|----------|---------|
| GROUP 1..... | \$ 22.22 | 16.75 |
| GROUP 2..... | \$ 22.33 | 16.75 |
| GROUP 3..... | \$ 22.39 | 16.75 |
| GROUP 4..... | \$ 22.57 | 16.75 |

| | | |
|--------------|----------|-------|
| GROUP 5..... | \$ 22.82 | 16.75 |
| GROUP 6..... | \$ 23.15 | 16.75 |
| GROUP 7..... | \$ 16.43 | 16.75 |
| AREA 2 | | |
| GROUP 1..... | \$ 23.75 | 12.85 |
| GROUP 2..... | \$ 23.84 | 12.85 |
| GROUP 3..... | \$ 23.94 | 12.85 |
| GROUP 4..... | \$ 24.10 | 12.85 |
| GROUP 5..... | \$ 24.38 | 12.85 |
| GROUP 6..... | \$ 24.67 | 12.85 |
| GROUP 7..... | \$ 16.94 | 12.85 |

SCOPE OF WORK: Tunnel, shaft and caisson work of every type and description and all operations incidental thereto, including, but not limited to, shafts and tunnels for sewers, water, subways, transportation, diversion, sewerage, caverns, shelters, aquifers, reservoirs, missile silos and steel sheeting for underground construction.

TUNNEL LABORER CLASSIFICATIONS

GROUP 1: Tunnel, shaft and caisson laborer, dump, shanty, hog house tender, testing (on gas) and watchman

GROUP 2: Manhole, headwall, catch basin builder, bricklayer tender, mortar machine and material mixer

GROUP 3: Air tool operator (jackhammer, bush hammer and grinder), first bottom, second bottom, cage tender, car pusher, carrier, concrete, concrete form, concrete repair, cement invert laborer, cement finisher, concrete shoveler, conveyor, floor, gasoline and electric tool operator, gunite, grout operator, welder, heading dinky person, inside lock tender, pea gravel operator, pump, outside lock tender, scaffold, top signal person, switch person, track, tugger, utility person, vibrator, winch operator, pipe jacking, wagon drill and air track operator and concrete saw operator (under 40 h.p.)

GROUP 4: Tunnel, shaft and caisson mucker, bracer, liner plate, long haul dinky driver and well point

GROUP 5: Tunnel, shaft and caisson miner, drill runner, key board operator, power knife operator, reinforced steel or mesh (e.g. wire mesh, steel mats, dowel bars, etc.)

GROUP 6: Dynamite and powder

GROUP 7: Restoration laborer, seeding, sodding, planting, cutting, mulching and top soil grading; and the restoration of property such as replacing mailboxes, wood chips, planter boxes, flagstones, etc.

LABO0334-001 09/01/2017

| Laborers - open cut: | Rates | Fringes |
|--|----------|---------|
| ZONE 1 - Macomb, Oakland And Wayne Counties: | | |
| GROUP 1..... | \$ 22.07 | 16.70 |
| GROUP 2..... | \$ 22.18 | 16.75 |
| GROUP 3..... | \$ 22.23 | 16.75 |
| GROUP 4..... | \$ 22.31 | 16.75 |
| GROUP 5..... | \$ 22.37 | 16.75 |
| GROUP 6..... | \$ 19.82 | 16.75 |
| GROUP 7..... | \$ 16.44 | 16.75 |
| ZONE 2 - LIVINGSTON COUNTY (east of M-151 (Oak Grove Rd.)); Monroe And Washtenaw Counties: | | |
| GROUP 1..... | \$ 23.40 | 12.85 |
| GROUP 2..... | \$ 23.51 | 12.85 |
| GROUP 3..... | \$ 23.63 | 12.85 |
| GROUP 4..... | \$ 23.70 | 12.85 |
| GROUP 5..... | \$ 23.85 | 12.85 |
| GROUP 6..... | \$ 21.15 | 12.85 |
| GROUP 7..... | \$ 17.79 | 12.85 |
| ZONE 3 - Clinton, Eaton, Genesee, Hillsdale And Ingham Counties; Ionia County (City Of Portland); Jackson, Lapeer and Lenawee Counties; Livingston County (West Of M-151 Oak Grove Rd.); Sanilac, St. Clair And Shiawassee Counties: | | |
| GROUP 1..... | \$ 21.59 | 12.85 |
| GROUP 2..... | \$ 21.73 | 12.85 |
| GROUP 3..... | \$ 21.85 | 12.85 |
| GROUP 4..... | \$ 21.90 | 12.85 |
| GROUP 5..... | \$ 22.04 | 12.85 |
| GROUP 6..... | \$ 19.34 | 12.85 |
| GROUP 7..... | \$ 16.49 | 12.85 |
| ZONE 4 - Alcona, Allegan, Alpena, Antrim, Arenac, Barry, Bay, Benzie, Berrien, Branch, Calhoun, Cass, Charlevoix, | | |

Cheboygan, Clare, Crawford, Emmet, Gladwin, Grand Traverse, Gratiot And Huron Counties; Ionia County (Except The City Of Portland); Iosco, Isabella, Kalamazoo, Kalkaska, Kent, Lake, Leelanau, Manistee, Mason, Mecosta, Midland, Missaukee, Montcalm, Montmorency, Muskegon, Newaygo, Oceana, Ogemaw, Osceola, Oscoda, Otsego, Ottawa, Presque Isle, Roscommon, Saginaw, St. Joseph, Tuscola, Van Buren and Wexford Counties:

| | | |
|--------------|----------|-------|
| GROUP 1..... | \$ 20.60 | 12.85 |
| GROUP 2..... | \$ 20.73 | 12.85 |
| GROUP 3..... | \$ 20.84 | 12.85 |
| GROUP 4..... | \$ 20.91 | 12.85 |
| GROUP 5..... | \$ 21.03 | 12.85 |
| GROUP 6..... | \$ 18.25 | 12.85 |
| GROUP 7..... | \$ 16.59 | 12.85 |

ZONE 5 - Alger, Baraga, Chippewa, Delta, Dickinson, Gogebic, Houghton, Iron, Keweenaw, Luce, Mackinac, Marquette, Menominee, Ontonagon And Schoolcraft Counties:

| | | |
|--------------|----------|-------|
| GROUP 1..... | \$ 20.81 | 12.85 |
| GROUP 2..... | \$ 20.95 | 12.85 |
| GROUP 3..... | \$ 21.08 | 12.85 |
| GROUP 4..... | \$ 21.13 | 12.85 |
| GROUP 5..... | \$ 21.18 | 12.85 |
| GROUP 6..... | \$ 18.56 | 12.85 |
| GROUP 7..... | \$ 16.67 | 12.85 |

SCOPE OF WORK: Open cut construction work shall be construed to mean work which requires the excavation of earth including industrial, commercial and residential building site excavation and preparation, land balancing, demolition and removal of concrete and underground appurtenances, grading, paving, sewers, utilities and improvements; retention, oxidation, flocculation and irrigation facilities, and also including but not limited to underground piping, conduits, steel sheeting for underground construction, and all work incidental thereto, and general excavation. For all areas except the Upper Peninsula, open cut construction work shall also be construed to mean waterfront work, piers, docks, seawalls, breakwalls, marinas and all incidental work. Open cut construction work shall not include any structural modifications, alterations, additions and repairs to buildings, or highway work, including roads, streets, bridge construction and parking lots or steel erection work and excavation for the building itself and back filling inside of and within 5 ft. of the building and foundations, footings and piers for the building. Open cut construction work shall not include any work covered under Tunnel, Shaft and Caisson work.

OPEN CUT LABORER CLASSIFICATIONS

- GROUP 1: Construction laborer
- GROUP 2: Mortar and material mixer, concrete form person, signal person, well point person, manhole, headwall and catch basin builder, headwall, seawall, breakwall and dock builder
- GROUP 3: Air, gasoline and electric tool operator, vibrator operator, driller, pump person, tar kettle operator, bracer, rodder, reinforced steel or mesh person (e.g., wire mesh, steel mats, dowel bars, etc.), welder, pipe jacking and boring person, wagon drill and air track operator and concrete saw operator (under 40 h.p.), windlass and tugger person and directional boring person
- GROUP 4: Trench or excavating grade person
- GROUP 5: Pipe layer (including crock, metal pipe, multi-plate or other conduits)
- GROUP 6: Grouting man, audio-visual television operations and all other operations in connection with closed circuit television inspection, pipe cleaning and pipe relining work and the installation and repair of water service pipe and appurtenances
- GROUP 7: Restoration laborer, seeding, sodding, planting, cutting, mulching and top soil grading; and the restoration of property such as replacing mailboxes, wood chips, planter boxes, flagstones, etc.

LABO0465-001 06/01/2017

LABORER: Highway, Bridge and Airport Construction

- AREA 1: Genesee, Macomb, Monroe, Oakland, Washtenaw And Wayne Counties
- AREA 2: Allegan, Barry, Bay, Berrien, Branch, Calhoun, Cass, Clinton, Eaton, Gratiot, Hillsdale, Huron, Ingham, Jackson, Kalamazoo, Lapeer, Lenawee, Livingston, Midland, Muskegon, Saginaw, Sanilac, Shiawassee, St. Clair, St. Joseph, Tuscola And Van Buren Counties
- AREA 3: Alcona, Alpena, Antrim, Arenac, Benzie, Charlevoix, Cheboygan, Clare, Crawford, Emmet, Gladwin, Grand Traverse, Ionia, Iosco, Isabella, Kalkaska, Kent, Lake, Leelanau, Manistee, Mason, Mecosta, Missaukee, Montcalm, Montmorency, Newaygo, Oceana, Ogemaw, Osceola, Oscoda, Otsego, Ottawa, Presque Isle, Roscommon And Wexford Counties
- AREA 4: Alger, Baraga, Chippewa, Delta, Dickinson, Gogebic, Houghton, Iron, Keweenaw, Luce, Mackinac, Marquette, Menominee, Ontonagon And Schoolcraft Counties

| LABORER (AREA 1) | Rates | Fringes | LABORER (AREA 3) | Rates | Fringes |
|------------------|----------|---------|------------------|----------|---------|
| GROUP 1..... | \$ 25.74 | 12.85 | GROUP 1..... | \$ 22.92 | 12.85 |
| GROUP 2..... | \$ 25.87 | 12.85 | GROUP 2..... | \$ 23.13 | 12.85 |
| GROUP 3..... | \$ 26.05 | 12.85 | GROUP 3..... | \$ 23.42 | 12.85 |
| GROUP 4..... | \$ 26.13 | 12.85 | GROUP 4..... | \$ 23.86 | 12.85 |
| GROUP 5..... | \$ 26.34 | 12.85 | GROUP 5..... | \$ 23.48 | 12.85 |
| GROUP 6..... | \$ 26.64 | 12.85 | GROUP 6..... | \$ 23.91 | 12.85 |
| LABORER (AREA 2) | | | LABORER (AREA 4) | | |
| GROUP 1..... | \$ 23.67 | 12.85 | GROUP 1..... | \$ 22.94 | 12.85 |
| GROUP 2..... | \$ 23.87 | 12.85 | GROUP 2..... | \$ 23.15 | 12.85 |
| GROUP 3..... | \$ 24.11 | 12.85 | GROUP 3..... | \$ 23.44 | 12.85 |
| GROUP 4..... | \$ 24.46 | 12.85 | GROUP 4..... | \$ 23.88 | 12.85 |
| GROUP 5..... | \$ 24.33 | 12.85 | GROUP 5..... | \$ 23.50 | 12.85 |
| GROUP 6..... | \$ 24.67 | 12.85 | GROUP 6..... | \$ 23.93 | 12.85 |

LABORER CLASSIFICATIONS

GROUP 1: Asphalt shoveler or loader; asphalt plant misc.; burlap person; yard person; dumper (wagon, truck, etc.); joint filling laborer; miscellaneous laborer; unskilled laborer; sprinkler laborer; form setting laborer; form stripper; pavement reinforcing; handling and placing (e.g., wire mesh, steel mats, dowel bars); mason's tender or bricklayer's tender on manholes; manhole builder; headwalls, etc.; waterproofing,(other than buildings) seal coating and slurry mix, shoring, underpinning; pressure grouting; bridge pin and hanger removal; material recycling laborer; horizontal paver laborer (brick, concrete, clay, stone and asphalt); ground stabilization and modification laborer; grouting; waterblasting; top person; railroad track and trestle laborer; carpenters' tender; guard rail builders' tender; earth retention barrier and wall and M.S.E. wall installer's tender; highway and median installer's tender(including sound, retaining, and crash barriers); fence erector's tender; asphalt raker tender; sign installer; remote control operated equipment.

GROUP 2: Mixer operator (less than 5 sacks); air or electric tool operator (jackhammer, etc.); spreader; boxperson (asphalt, stone, gravel); concrete paddler; power chain saw operator; paving batch truck dumper; tunnel mucker (highway work only); concrete saw (under 40 h.p.) and dry pack machine; roto-mill grounds person.

GROUP 3: Tunnel miner (highway work only); finishers tenders; guard rail builders; highway and median barrier installer; earth retention barrier and wall and M.S.E. wall installer's (including sound, retaining and crash barriers); fence erector; bottom person; powder person; wagon drill and air track operator; diamond and core drills; grade checker; certified welders; curb and side rail setter's tender.

GROUP 4: Asphalt raker

GROUP 5: Pipe layers, oxy-gun

GROUP 6: Line-form setter for curb or pavement; asphalt screed checker/screw man on asphalt paving machines.

LABO1076-005 04/01/2017
MICHIGAN STATEWIDE

| | Rates | Fringes |
|-----------------------------|----------|---------|
| LABORER (DISTRIBUTION WORK) | | |
| Zone 1..... | \$ 19.99 | 12.85 |
| Zone 2..... | \$ 18.35 | 12.85 |
| Zone 3..... | \$ 16.56 | 12.85 |
| Zone 4..... | \$ 15.92 | 12.85 |
| Zone 5..... | \$ 15.92 | 12.85 |

DISTRIBUTION WORK - The construction, installation, treating and reconditioning of distribution pipelines transporting coal, oil, gas or other similar materials, vapors or liquids, including pipelines within private property boundaries, up to and including the meter settings on residential, commercial, industrial, institutional, private and public structures. All work covering pumping stations and tank farms not covered by the Building Trades Agreement. Other distribution lines with the exception of sewer, water and cable television are included.

Underground Duct Layer Pay: \$.40 per hour above the base pay rate.

Zone 1 - Macomb, Oakland and Wayne

Zone 2 - Monroe and Washtenaw

Zone 3 - Bay, Genesee, Lapeer, Midland, Saginaw, Sanilac, Shiawassee and St. Clair

Zone 4 - Alger, Baraga, Chippewa, Delta, Dickinson, Gogebic, Houghton, Iron, Keweenaw, Luce, Mackinac, Marquette, Menominee, Ontonagon and Schoolcraft Zone 5 - Remaining Counties in Michigan

PAIN0022-002 07/01/2008

Hillsdale, Jackson And Lenawee Counties; Livingston County (east of the eastern city limits of Howell, not including the city of Howell, north to the Genesee County line and south to the Washtenaw County line); Macomb, Monroe, Oakland, Washtenaw and Wayne Counties:

| | Rates | Fringes |
|--------------|----------|---------|
| PAINTER..... | \$ 25.06 | 14.75 |

FOOTNOTES: For all spray work and journeyman rigging for spray work, also blowing off, \$0.80 per hour additional (applies only to workers doing rigging for spray work on off the floor work. Does not include setting up or moving rigging on floor surfaces, nor does it apply to workers engaged in covering up or tending spray equipment. For all sandblasting and spray work performed on highway bridges, overpasses, tanks or steel, \$0.80 per hour additional. For all brushing, cleaning and other preparatory work (other than spraying or steeplejack work) at scaffold heights of fifty (50) feet from the ground or higher, \$0.50 per hour additional. For all preparatorial work and painting performed on open steel under forty (40) feet when no scaffolding is involved, \$0.50 per hour additional. For all swing stage work-window jacks and window belts-exterior and interior, \$0.50 per hour additional. For all spray work and sandblaster work to a scaffold height of forty (40) feet above the floor level, \$0.80 per hour additional. For all preparatorial work and painting on all highway bridges or overpasses up to forty (40) feet in height, \$0.50 per hour additional. For all steeplejack work performed where the elevation is forty (40) feet or more, \$1.25 per hour additional.

PAIN0312-001 06/12/2014

EXCLUDES: ALLEGAN COUNTY (Townships of Dorr, Fillmore, Heath, Hopkins, Laketown, Leighton, Manlius, Monterey, Overisel, Salem, Saugatuck and Wayland); INCLUDES: Barry, Berrien, Branch, Calhoun, Cass, Hillsdale, Kalamazoo, St. Joseph, Van Buren

| | Rates | Fringes |
|--------------------------------------|----------|---------|
| PAINTER | | |
| Brush and roller..... | \$ 21.75 | 11.94 |
| Spray, Sandblast, Sign Painting..... | \$ 22.75 | 11.94 |

PAIN0845-003 05/21/2014

Clinton County; Eaton County (does not include the townships of Bellevue and Olivet); Ingham County; Ionia County (east of Hwy. M 66); Livingston County (west of the eastern city limits of Howell, including the city of Howell, north to the Genesee County line and south to the Washtenaw County line); AND Shiawassee County (Townships of Bennington, Laingsbury and Perry):

| | Rates | Fringes |
|--------------|----------|---------|
| PAINTER..... | \$ 21.89 | 11.85 |

PAIN0845-015 05/21/2014

Muskegon County; Newaygo County (except the Townships of Barton, Big Prairie, Brooks, Croton, Ensley, Everett, Goodwell, Grant, Home, Monroe, Norwich and Wilcox); Oceana County; Ottawa County (except the townships of Allendale, Blendone, Chester, Georgetown, Holland, Jamestown, Olive, Park, Polkton, Port Sheldon, Tallmadge, Wright and Zeeland):

| | Rates | Fringes |
|--------------|----------|---------|
| PAINTER..... | \$ 21.89 | 11.85 |

PAIN0845-018 05/21/2014

Allegan County (Townships of Dorr, Fillmore, Heath, Hopkins, Laketown, Leighton, Manlius, Monterey, Overisel, Salem, Saugatuck and Wayland); Ionia County (west of Hwy. M-66); Kent, Mecosta And Montcalm Counties; Newaygo County (Townships of Barton, Big Prairie, Brooks, Croton, Ensley, Everett, Goodwell, Grant, Home, Monroe, Norwich and Wilcox); OSCEOLA COUNTY (south of Hwy. #10); Ottawa County (Townships of Allendale, Blendone, Chester, Georgetown, Holland, Jamestown, Olive, Park, Polkton, Port Sheldon, Tallmadge, Wright and Zeeland):

| | Rates | Fringes |
|--------------|----------|---------|
| PAINTER..... | \$ 21.89 | 11.85 |

FOOTNOTES: Lead abatement work: \$1.00 per hour additional.

PAIN1011-003 06/05/2014

Alger, Baraga, Chippewa, Delta, Dickinson, Gogebic, Houghton, Iron, Keweenaw, Luce, Mackinac, Marquette, Menominee, Ontonagon and Schoolcraft Counties:

| | Rates | Fringes |
|--------------|----------|---------|
| PAINTER..... | \$ 24.15 | 10.52 |

FOOTNOTES: High pay (bridges, overpasses, watertower): 30 to 80 ft.: \$.65 per hour additional. 80 ft. and over: \$1.30 per hour additional.

PAIN1474-002 06/01/2010

Huron County; Lapeer County (east of Hwy. M-53); St. Clair, Sanilac And Tuscola Counties:

| | Rates | Fringes |
|--------------|----------|---------|
| PAINTER..... | \$ 23.79 | 12.02 |

FOOTNOTES: Lead abatement work: \$1.00 per hour additional. Work with any hazardous material: \$1.00 per hour additional. Sandblasting, steam cleaning and acid cleaning: \$1.00 per hour additional. Ladder work at or above 40 ft. scaffold work at or above 40 ft., swing stage, boatswain chair, window jacks and all work performed over a falling height of 40 ft.: \$1.00 per hour additional. Spray gun work, pick pullers and those handling needles, blowing off by air pressure, and any person rigging (setting up and moving off the ground): \$1.00 per hour additional. Steeplejack, tanks, gas holders, stacks, flag poles, radio towers and beacons, power line towers, bridges, etc.: \$1.00 per hour additional, paid from the ground up.

PAIN1803-003 06/01/2017

Alcona, Alpena, Antrim, Arenac, Bay, Benzie, Charlevoix, Cheboygan, Clare, Crawford, Emmet, Gladwin, Grand Traverse, Gratiot, Iosco, Isabella, Kalkaska, Lake, Leelanau, Manistee, Mason, Midland, Missaukee, Montmorency and Ogemaw Counties; Osceola County (North Of Hwy. #10); Oscoda, Otsego, Presque Isle, Roscommon, Saginaw and Wexford Counties:

| PAINTER | Rates | Fringes |
|---------|-------|---------|
|---------|-------|---------|

| | | |
|--|----------|-------|
| Work performed on water, bridges over water or moving traffic, radio and powerline towers, elevated tanks, steeples, smoke stacks over 40 ft. of falling heights, recovery of lead-based paints and any work associated with industrial plants, except maintenance of industrial plants..... | \$ 25.10 | 13.85 |
| All other work, including maintenance of industrial plant..... | \$ 23.68 | 13.85 |

FOOTNOTES: Spray painting, sandblasting, blowdown associated with spraying and blasting, water blasting and work involving a swing stage, boatswain chair or spider: \$1.00 per hour additional. All work performed inside tanks, vessels, tank trailers, railroad cars, sewers, smoke stacks, boilers or other spaces having limited egress not including buildings, opentop tanks, pits, etc.: \$1.25 per hour additional.

PLAS0514-001 06/01/2017

Zone 1: Genesee, Livingston, Macomb, Monroe, Oakland, Saginaw, Washtenaw And Wayne Counties

Zone 2: Alcona, Alger, Allegan, Alpena, Antrim, Arenac, Baraga, Barry, Bay, Benzie, Berrien, Branch, Calhoun, Cass, Charlevoix, Cheboygan, Chippewa, Clare, Clinton, Crawford, Delta, Dickinson, Eaton, Emmet, Gladwin, Gogebic, Grand Traverse, Gratiot, Hillsdale, Houghton, Huron, Ingham, Ionia, Iosco, Iron, Isabella, Jackson, Kalamazoo, Kalkaska, Kent, Keweenaw, Lake, Lapeer, Leelanau, Lenawee, Luce, Mackinac, Manistee, Marquette, Mason, Mecosta, Menominee, Midland, Missaukee, Montcalm, Montmorency, Muskegon, Newaygo, Oceana, Ogemaw, Ontonagon, Osceola, Oscoda, Otsego, Ottawa, Presque Isle, Roscommon, Sanilac, Schoolcraft, Shiawassee, St. Clair, St. Joseph, Tuscola, Van Buren And Wexford Counties

| | Rates | Fringes |
|--------------------------------|----------|---------|
| CEMENT MASON/CONCRETE FINISHER | | |
| ZONE 1..... | \$ 30.94 | 13.59 |
| ZONE 2..... | \$ 29.44 | 13.59 |

PLUM0190-003 05/01/2015

Alcona, Alger, Allegan, Alpena, Antrim, Arenac, Baraga, Barry, Bay, Benzie, Berrien, Branch, Calhoun, Cass, Charlevoix, Cheboygan, Chippewa, Clare, Clinton, Crawford, Delta, Dickinson, Eaton, Emmet, Genesee, Gladwin, Gogebic, Grand Traverse, Gratiot, Hillsdale, Houghton, Huron, Ingham, Ionia, Iosco, Iron, Isabella, Jackson, Kalamazoo, Kalkaska, Kent, Keweenaw, Lake, Lapeer, Leelanau, Lenawee, Livingston, Luce, Mackinac, Macomb, Manistee, Marquette, Mason, Mecosta, Menominee, Midland, Missaukee, Montcalm, Montmorency, Monroe, Muskegon, Newaygo, Oakland, Oceana, Ogemaw, Ontonagon, Osceola, Oscoda, Otsego, Ottawa, Presque Isle, Roscommon, Saginaw, St. Clair, St. Joseph, Sanilac, Schoolcraft, Shiawassee, Tuscola, Van Buren, Washtenaw, Wayne And Wexford Counties

| Plumber/Pipefitter – gas distribution pipeline: | Rates | Fringes |
|---|----------|---------|
| Welding in conjunction with gas distribution pipeline work..... | \$ 33.03 | 20.19 |
| All other work:..... | \$ 24.19 | 12.28 |

TEAM0007-004 06/01/2017

Area 1: Alcona, Alger, Allegan, Alpena, Antrim, Arenac, Baraga, Barry, Bay, Benzie, Berrien, Branch, Calhoun, Cass, Charlevoix, Cheboygan, Chippewa, Clare, Clinton, Crawford, Delta, Dickinson, Eaton, Emmet, Gladwin, Gogebic, Grand Traverse, Gratiot, Hillsdale, Houghton, Huron, Ingham, Ionia, Iosco, Iron, Isabella, Jackson, Kalamazoo, Kalkaska, Kent, Keweenaw, Lake, Lapeer, Leelanau, Lenawee, Luce, Mackinac, Manistee, Marquette, Mason, Mecosta, Menominee, Midland, Missaukee, Montcalm, Montmorency, Muskegon, Newaygo, Oceana, Ogemaw, Ontonagon, Osceola, Oscoda, Otsego, Ottawa, Presque Isle, Roscommon, Saginaw, Sanilac, Schoolcraft, Shiawassee, St. Clair, St. Joseph, Tuscola, Van Buren And Wexford Counties

Area 2: Genesee, Livingston, Macomb, Monroe, Oakland, Washtenaw And Wayne Counties

| TRUCK DRIVER | Rates | Fringes |
|---|-----------|-----------|
| AREA 1 | | |
| Euclids, double bottoms and lowboys..... | \$ 25.05 | .50 + a+b |
| Trucks under 8 cu. yds..... | \$ 24.80 | .50 + a+b |
| Trucks, 8 cu. yds. and over..... | \$ 24.90 | .50 + a+b |
| AREA 2 | | |
| Euclids, double bottomms and lowboys..... | \$ 24.895 | .50 + a+b |
| Euclids, double bottoms and lowboys..... | \$ 25.15 | .50 + a+b |
| Trucks under 8 cu. yds..... | \$ 24.90 | .50 + a+b |
| Trucks, 8 cu. yds. and over..... | \$ 25.00 | .50 + a+b |

Footnote:

- a. \$455.00 per week
- b. \$64.40 daily

TEAM0247-004 04/01/2013

Area 1: Alcona, Alger, Allegan, Alpena, Antrim, Arenac, Baraga, Barry, Bay, Benzie, Berrien, Branch, Calhoun, Cass, Charlevoix, Cheboygan, Chippewa, Clare, Clinton, Crawford, Delta, Dickinson, Eaton, Emmet, Gladwin, Gogebic, Grand Traverse, Gratiot, Hillsdale, Houghton, Huron, Ingham, Ionia, Iosco, Iron, Isabella, Jackson, Kalamazoo, Kalkaska, Kent, Keweenaw, Lake, Lapeer, Leelanau, Lenawee, Luce, Mackinac, Manistee, Marquette, Mason, Mecosta, Menominee, Midland, Missaukee, Montcalm, Montmorency, Muskegon, Newaygo, Oceana, Ogemaw, Ontonagon, Osceola, Oscoda, Otsego, Ottawa, Presque Isle, Roscommon, Sanilac, Schoolcraft, Shiawassee, Saginaw, St. Clair, St. Joseph, Tuscola, Van Buren And Wexford Counties

Area 2: Genesee, Livingston, Macomb, Monroe, Oakland, Washtenaw And Wayne Counties

| Sign Installer | Rates | Fringes |
|----------------|----------|---------|
| AREA 1 | | |
| GROUP 1..... | \$ 21.78 | 11.83 |
| GROUP 2..... | \$ 25.27 | 11.8375 |
| AREA 2 | | |
| GROUP 1..... | \$ 22.03 | 11.83 |
| GROUP 2..... | \$ 25.02 | 11.8375 |

FOOTNOTE:

- a. \$132.70 per week, plus \$17.80 per day.

SIGN INSTALLER CLASSIFICATIONS:

GROUP 1: performs all necessary labor and uses all tools required to construct and set concrete forms required in the installation of highway and street signs

GROUP 2: performs all miscellaneous labor, uses all hand and power tools, and operates all other equipment, mobile or otherwise, required for the installation of highway and street signs

TEAM0247-010 04/01/2017

Area 1: Lapeer And Shiawassee Counties

Area 2: Genesee, Macomb, Monroe, Oakland, St. Clair, Washtenaw And Wayne Counties

TRUCK DRIVER (Underground construction)

| AREA 1 | Rates | Fringes | AREA 2 | Rates | Fringes |
|--------------|----------|---------|--------------|----------|---------|
| GROUP 1..... | \$ 23.57 | 19.04 | GROUP 1..... | \$ 23.87 | 19.04 |
| GROUP 2..... | \$ 23.66 | 19.04 | GROUP 2..... | \$ 24.01 | 19.04 |
| GROUP 3..... | \$ 23.87 | 19.04 | GROUP 3..... | \$ 24.20 | 19.04 |

PAID HOLIDAYS: New Year's Day, Memorial Day, Fourth of July, Labor Day, Thanksgiving Day and Christmas Day.

SCOPE OF WORK: Excavation, site preparation, land balancing, grading, sewers, utilities and improvements; also including but not limited to, tunnels, underground piping, retention, oxidation, flocculation facilities, conduits, general excavation and steel sheeting for underground construction. Underground construction work shall not include any structural modifications, alterations, additions and repairs to buildings or highway work, including roads, streets, bridge construction and parking lots or steel erection.

TRUCK DRIVER CLASSIFICATIONS

GROUP 1: Truck driver on all trucks (EXCEPT dump trucks of 8 cubic yards capacity or over, pole trailers, semis, low boys, Euclid, double bottom and fuel trucks)

GROUP 2: Truck driver on dump trucks of 8 cubic yards capacity or over, pole trailers, semis and fuel trucks

GROUP 3: Truck driver on low boy, Euclid and double bottom

SUMI2002-001 05/01/2002

| | Rates | Fringes |
|--|----------|---------|
| Flag Person..... | \$ 10.10 | 0.00 |
| LINE PROTECTOR (ZONE 1: Genesee, Macomb, Monroe, Oakland, Washtenaw And Wayne)..... | \$ 18.98 | 12.17 |
| LINE PROTECTOR (ZONE 2: Statewide (Excluding Genesee, Macomb, Monroe, Oakland, Washtenaw and Wayne).. | \$ 17.14 | 12.17 |
| Pavement Marking Machine (ZONE 1: Genesee, Macomb, Monroe, Oakland, Washtenaw And Wayne Counties) | | |
| Group 1..... | \$ 24.89 | 12.17 |
| Pavement Marking Machine (ZONE 1: Genesee, Macomb, Monroe, Oakland, Washtenaw And Wayne) | | |
| Group 2..... | \$ 22.40 | 12.17 |
| Pavement Marking Machine (ZONE 2: Statewide (Excluding Genesee, Macomb, Monroe, Oakland, Washtenaw And Wayne Counties) | | |
| Group 1..... | \$ 22.89 | 12.17 |
| Pavement Marking Machine | | |
| (ZONE 2: Statewide (Excluding Genesee, Macomb, Monroe, Oakland, Washtenaw And Wayne) | | |
| Group 2..... | \$ 20.60 | 12.17 |

WORK CLASSIFICATIONS:

PAVEMENT MARKER GROUP 1: Drives or operates a truck mounted striper, grinder, blaster, groover, or thermoplastic melter for the placement or removal of temporary or permanent pavement markings or markers.

PAVEMENT MARKER GROUP 2: Performs all functions involved for the placement or removal of temporary or permanent pavement markings or markers not covered by the classification of Pavement Marker Group 1 or Line Protector.

LINE PROTECTOR: Performs all operations for the protection or removal of temporary or permanent pavement markings or markers in a moving convoy operation not performed by the classification of Pavement Marker Group 1. A moving convoy operation is comprised of only Pavement Markers Group 1 and Line Protectors.

WELDERS - Receive rate prescribed for craft performing operation to which welding is incidental.

Note: Executive Order (EO) 13706, Establishing Paid Sick Leave for Federal Contractors applies to all contracts subject to the Davis-Bacon Act for which the contract is awarded (and any solicitation was issued) on or after January 1, 2017. If this contract is covered by the EO, the contractor must provide employees with 1 hour of paid sick leave for every 30 hours they work, up to 56 hours of paid sick leave each year. Employees must be permitted to use paid sick leave for their own illness, injury or other health-related needs, including preventive care; to assist a family member (or person who is like family to the employee) who is ill, injured, or has other health-related needs, including preventive care; or for reasons resulting from, or to assist a family member (or person who is like family to the employee) who is a victim of, domestic violence, sexual assault, or stalking. Additional information on contractor requirements and worker protections under the EO is available at www.dol.gov/whd/govcontracts.

Unlisted classifications needed for work not included within the scope of the classifications listed may be added after award only as provided in the labor standards contract clauses (29CFR 5.5 (a) (1) (ii)).

The body of each wage determination lists the classification and wage rates that have been found to be prevailing for the cited type(s) of construction in the area covered by the wage determination. The classifications are listed in alphabetical order of "identifiers" that indicate whether the particular rate is a union rate (current union negotiated rate for local), a survey rate (weighted average rate) or a union average rate (weighted union average rate).

Union Rate Identifiers

A four letter classification abbreviation identifier enclosed in dotted lines beginning with characters other than "SU" or "UAVG" denotes that the union classification and rate were prevailing for that classification in the survey. Example: PLUM0198-005 07/01/2014. PLUM is an abbreviation identifier of the union which prevailed in the survey for this classification, which in this example would be Plumbers. 0198 indicates the local union number or district council number where applicable, i.e., Plumbers Local 0198. The next number, 005 in the example, is an internal number used in processing the wage determination. 07/01/2014 is the effective date of the most current negotiated rate, which in this example is July 1, 2014.

Union prevailing wage rates are updated to reflect all rate changes in the collective bargaining agreement (CBA) governing this classification and rate.

Survey Rate Identifiers

Classifications listed under the "SU" identifier indicate that no one rate prevailed for this classification in the survey and the published rate is derived by computing a weighted average rate based on all the rates reported in the survey for that classification. As this weighted average rate includes all rates reported in the survey, it may include both union and non-union rates. Example: SULA2012-007 5/13/2014. SU indicates the rates are survey rates based on a weighted average calculation of rates and are not majority rates. LA indicates the State of Louisiana. 2012 is the year of survey on which these classifications and rates are based. The next number, 007 in the example, is an internal number used in producing the wage determination. 5/13/2014 indicates the survey completion date for the classifications and rates under that identifier.

Survey wage rates are not updated and remain in effect until a new survey is conducted.

Union Average Rate Identifiers

Classification(s) listed under the UAVG identifier indicate that no single majority rate prevailed for those classifications; however, 100% of the data reported for the classifications was union data. EXAMPLE: UAVG-OH-0010 08/29/2014. UAVG indicates that the rate is a weighted union average rate. OH indicates the state. The next number, 0010 in the example, is an internal number used in producing the wage determination. 08/29/2014 indicates the survey completion date for the classifications and rates under that identifier.

A UAVG rate will be updated once a year, usually in January of each year, to reflect a weighted average of the current negotiated/CBA rate of the union locals from which the rate is based.

WAGE DETERMINATION APPEALS PROCESS

1.) Has there been an initial decision in the matter? This can be:

- * an existing published wage determination
- * a survey underlying a wage determination
- * a Wage and Hour Division letter setting forth a position on a wage determination matter
- * a conformance (additional classification and rate) ruling

On survey related matters, initial contact, including requests for summaries of surveys, should be with the Wage and Hour Regional Office for the area in which the survey was conducted because those Regional Offices have responsibility for the Davis-Bacon survey program. If the response from this initial contact is not satisfactory, then the process described in 2.) and 3.) should be followed.

With regard to any other matter not yet ripe for the formal process described here, initial contact should be with the Branch of Construction Wage Determinations. Write to:

Branch of Construction Wage Determinations
Wage and Hour Division
U.S. Department of Labor
200 Constitution Avenue, N.W.
Washington, DC 20210

2.) If the answer to the question in 1.) is yes, then an interested party (those affected by the action) can request review and reconsideration from the Wage and Hour Administrator (See 29 CFR Part 1.8 and 29 CFR Part 7). Write to:

Wage and Hour Administrator
U.S. Department of Labor
200 Constitution Avenue, N.W.
Washington, DC 20210

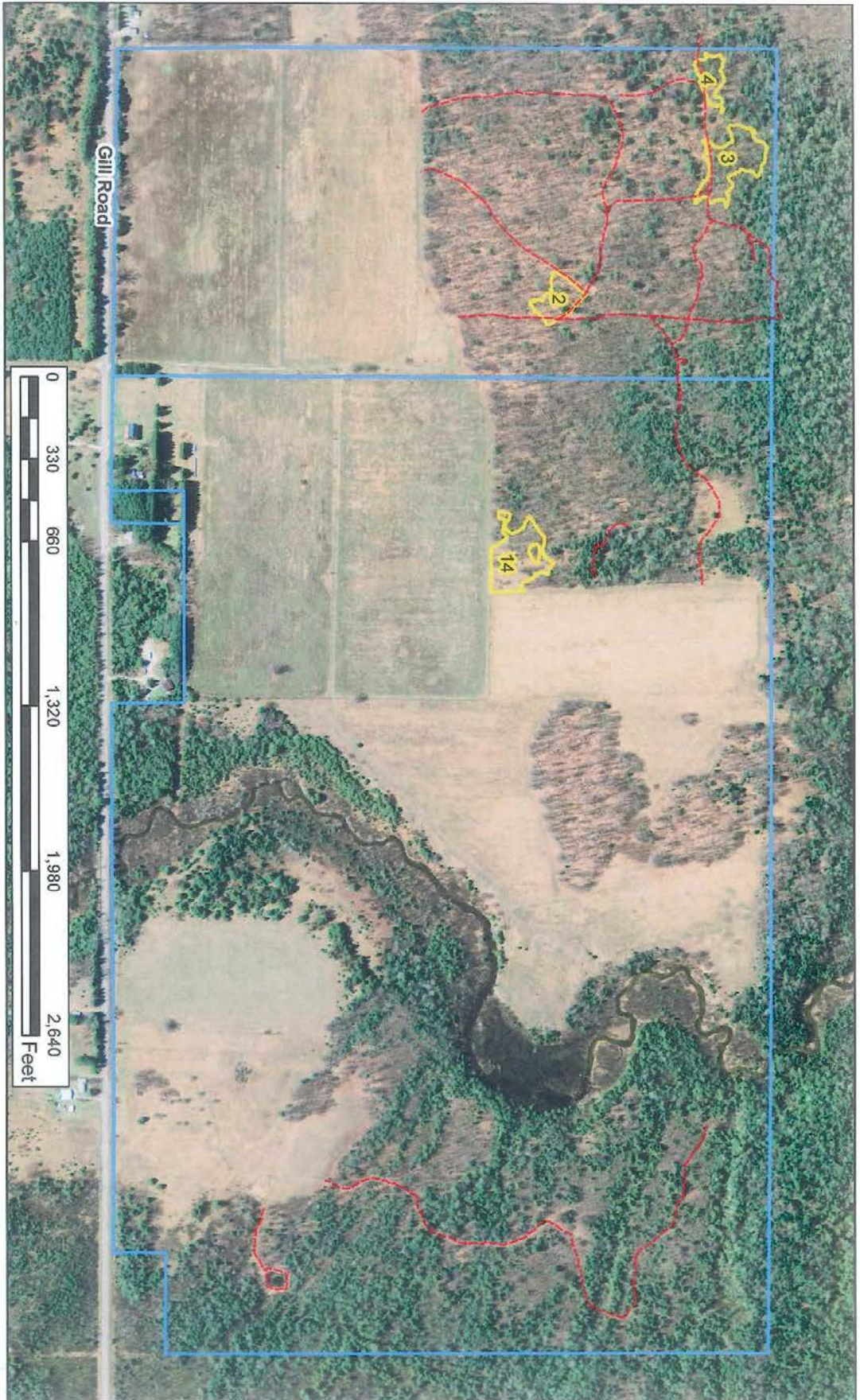
The request should be accompanied by a full statement of the interested party's position and by any information (wage payment data, project description, area practice material, etc.) that the requestor considers relevant to the issue.

3.) If the decision of the Administrator is not favorable, an interested party may appeal directly to the Administrative Review Board (formerly the Wage Appeals Board). Write to:

Administrative Review Board
U.S. Department of Labor
200 Constitution Avenue, N.W.
Washington, DC 20210

4.) All decisions by the Administrative Review Board are final.

END OF GENERAL DECISION



LTBB Ziibimijwang Gap Sites

Map created by Noah Jansen, LTBB Conservationist, 13 November 2017