

LTBB Master Land Use Plan



Draft Document Public
Presentation and Comment
Meeting

LTBB Master Land Use Plan

□ Facilitator Introduction









- Bryan Gillett, Planning Director
- Alan Proctor, Geographic Information Systems
- Doug Craven, Natural Resources Director
- Rachel Schwarz, Environmental Services Dir.
- Al Colby Jr., Tribal Administrator

Meeting Summary

- LTBB Master Land Use Plan Presentation
- Development Potential/Limitations Model
- 2004 Public Input Sessions Results
- LTBB Land Acquisition Policies
- Comment and Questions



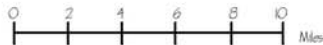
HISTORICAL BOUNDARY MAP

-  Emmet County - 183,025 acres in Tribal Boundary
-  Charlevoix County - 33,739 acres in Tribal Boundary
-  Tribal Boundary
-  Urban Area
-  Township Line
-  Water
-  Highway
-  Road

The Little Traverse Bay Band of Odawa Indians "Historical Tribal Boundary Map" is intended for general informational purposes only, and is subject to change. This map is not a legal document, and should not be used as such.

Source:
Emmet County, State of Michigan CGI,
Little Traverse Bay Band

State Plane NAD83, Michigan Central, Fed
May 28, 2002



Lake Michigan



LTBB Master Land Use Plan

- Purpose of Master Land Use Plan
 - Provides a resource document of current data and projected trends.
 - Relates data and projected trends to Tribal interests.
 - Provides a basis for the Land Acquisition Policy

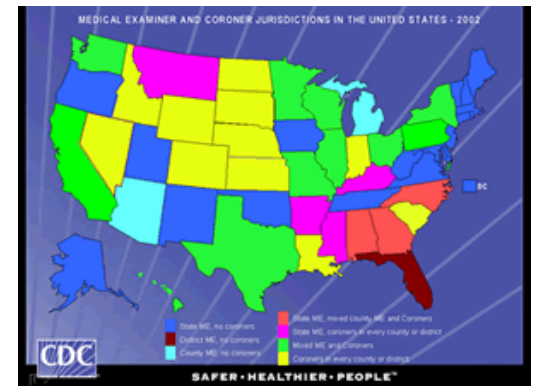
Master Plan

Purpose

- Combines current data and projected trends
- Relates data and projected trends to Tribal interests
- Provides a basis for the Land Acquisition Policy

Work Group

- Planning Department
- Environmental Services Department
- Natural Resources Department
- GIS Department
- Tribal Administrator



LTBB Master Land Use Plan

- Purpose of Land Acquisition Policy
 - Provides guidance for future tribal development
 - Provides a tool for using tribal funds efficiently
 - Provides a reflection of tribal member priorities
 - Prioritize to best utilize limited funding

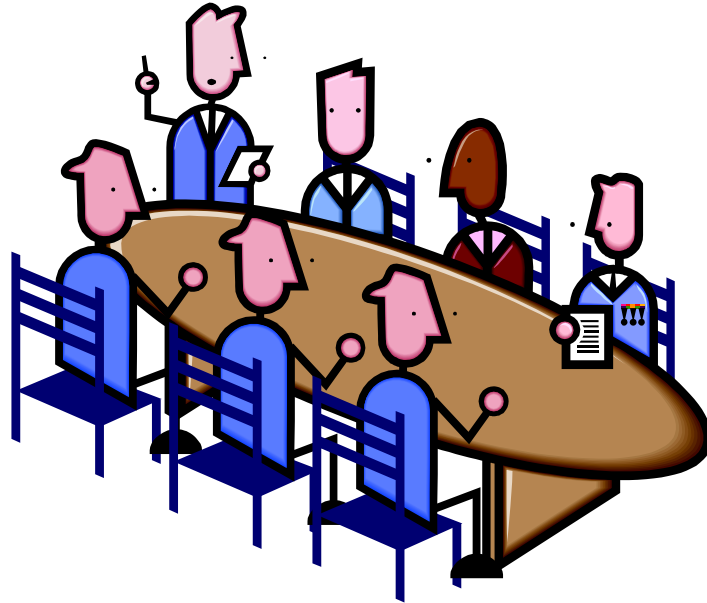
LTBB Master Land Use Plan

□ Purpose of Public Forum

- Method of obtaining Tribal member input for the Master Land Use Plan
- Method of educating participants on the process and purposes of the Master Land Use Plan
- Method of informing membership about the contents of the Master Land Use Plan

Plan Uses

- Provides guidance for Tribal Council
- Determines *suitability* of a parcel for acquisition



GIS Analysis

Two Maps

- High development Potential
- High development Limitations



Environmental Factors

Potential

- ❑ Septic Suitability
- ❑ Transportation Infrastructure
- ❑ Average Daily Traffic
- ❑ Zoning
- ❑ Proximity to Surface Water
- ❑ Land Use
- ❑ Proximity to Developed Land

Limitations

- ❑ Septic Suitability
- ❑ Transportation Infrastructure
- ❑ Average Daily Traffic
- ❑ Zoning
- ❑ Proximity to Surface Water
- ❑ Land Use
- ❑ Wetlands
- ❑ Culturally Significant Area
- ❑ Prime Farmlands

Other Rankings

Culturally Significant Areas

- Limitations score a 10 at all times

Wetlands

- Limitations score a 10 at all times

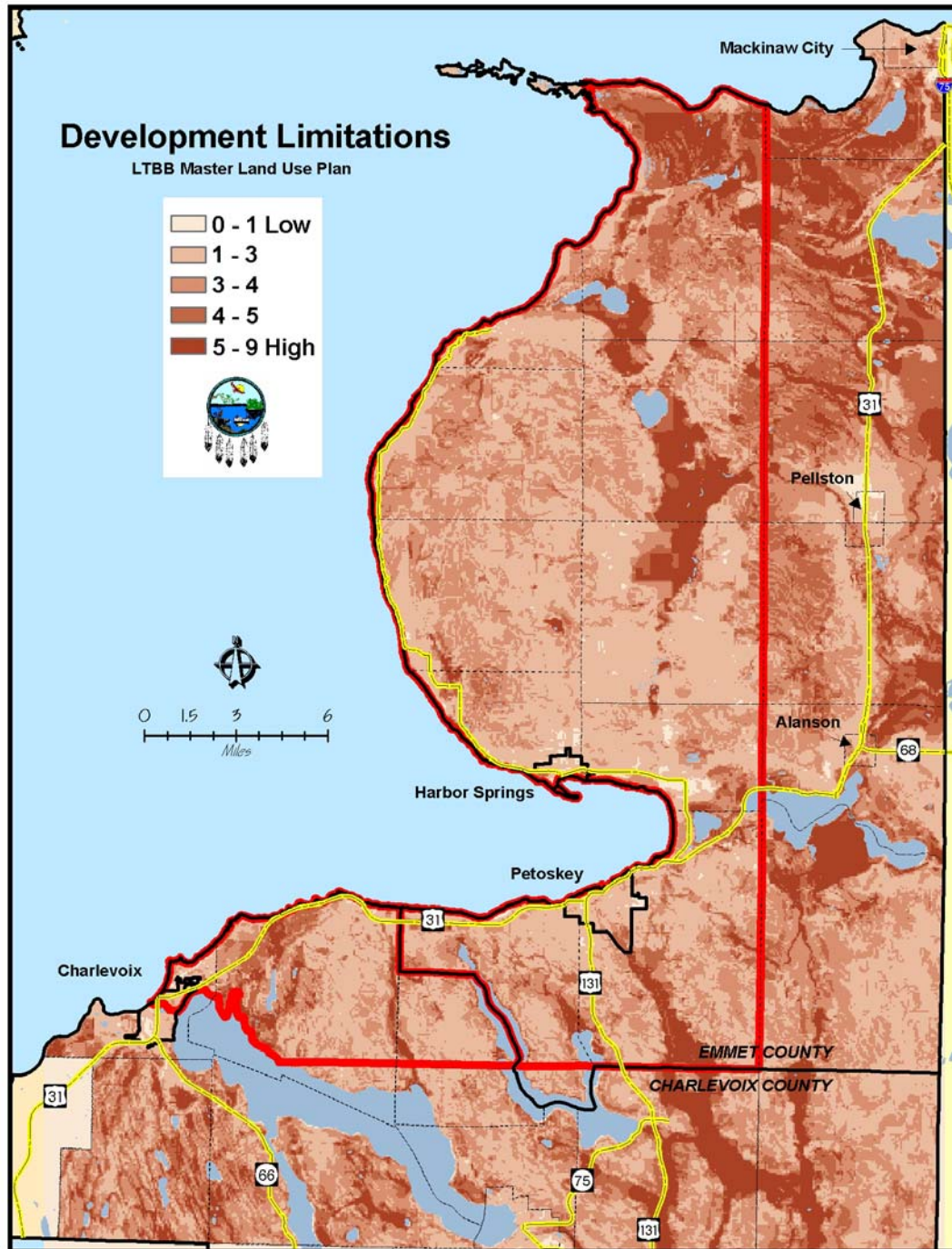
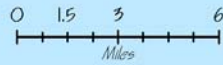
Prime Farmlands

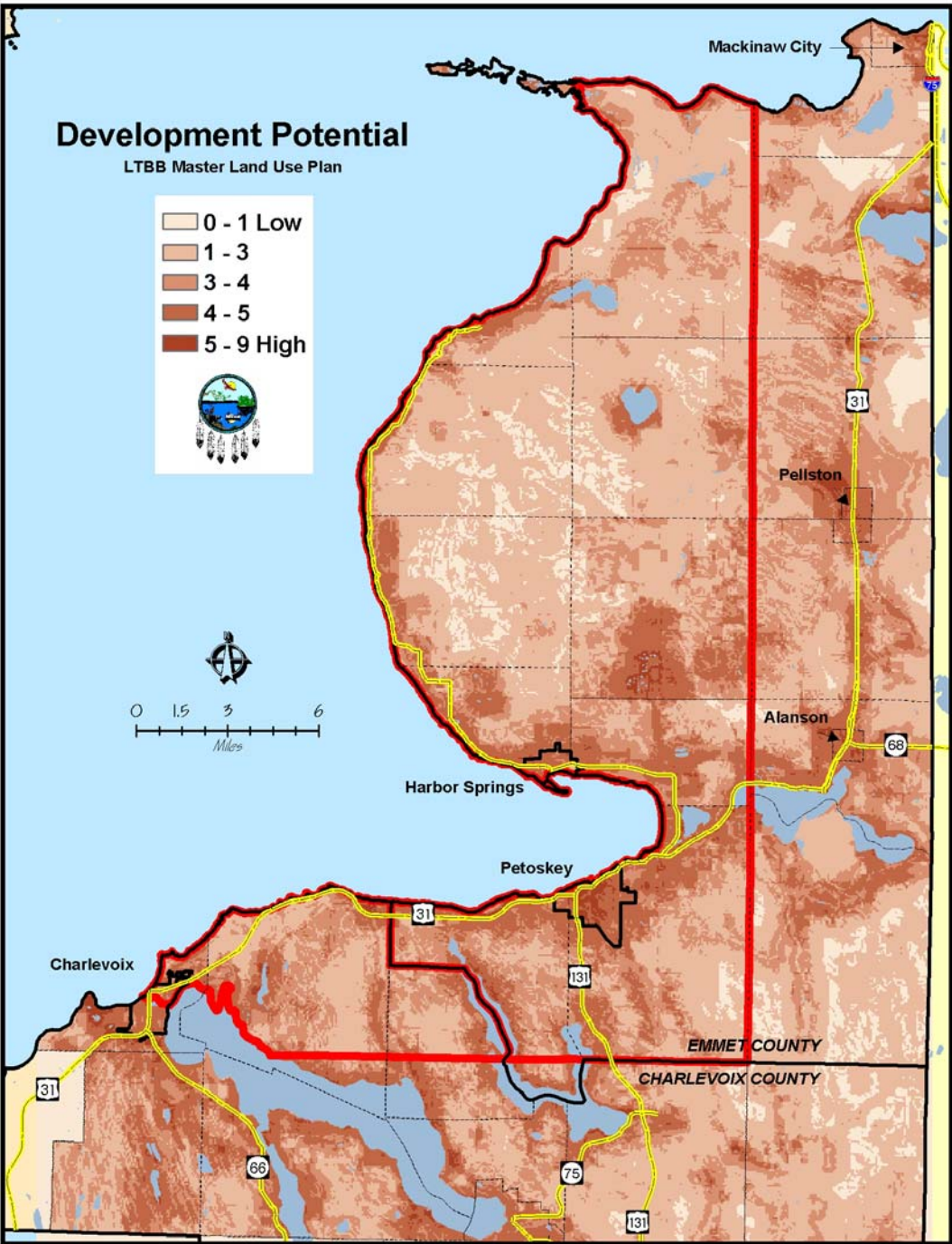
- Limitations score a 5 at all times

Development Limitations

LTBB Master Land Use Plan

- 0 - 1 Low
- 1 - 3
- 3 - 4
- 4 - 5
- 5 - 9 High





Potential Applications

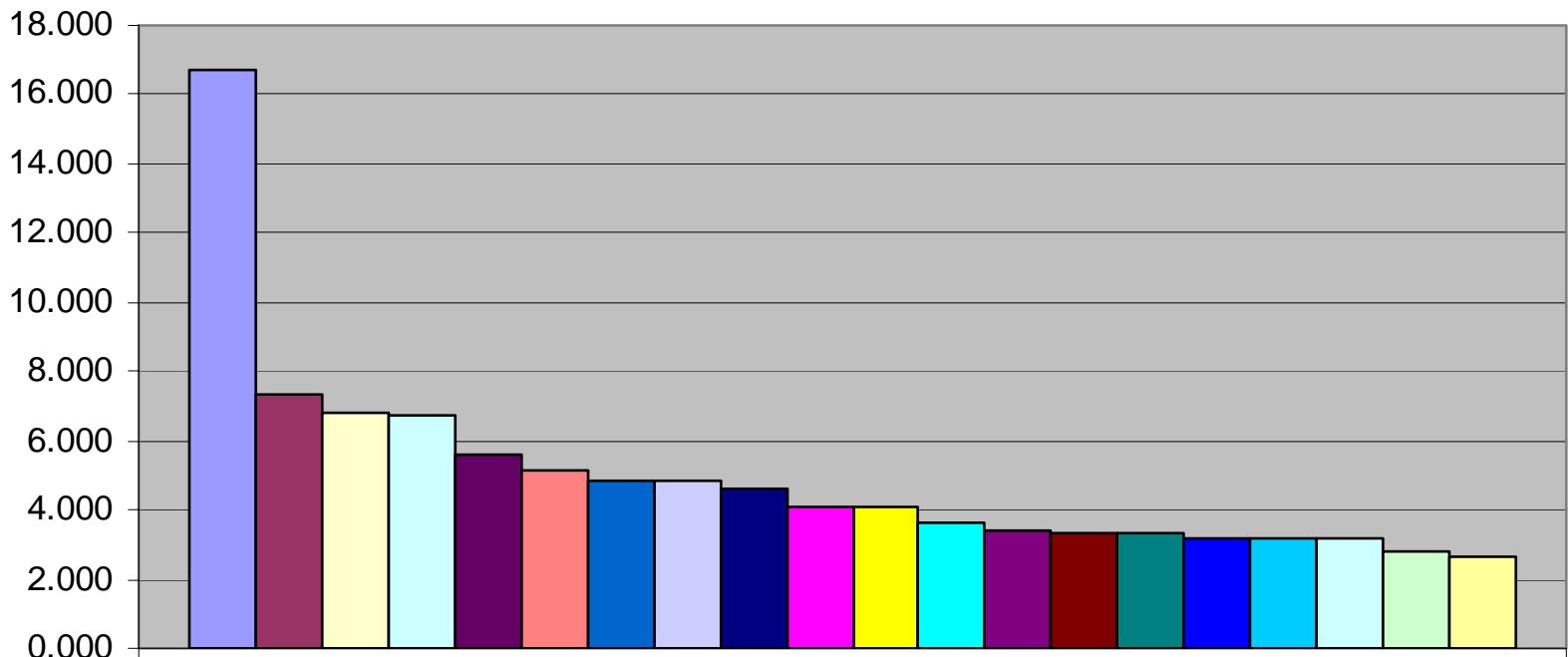
- Individual Tribal Needs
 - Alter Layers or Ranking
- Conservation
 - Wildlife Habitat
 - Vegetation

2004 Public Input Results

- ❑ Series of state-wide meetings to obtain tribal member input on development issues
- ❑ Input suggested from Departments, Commissions, Tribal Citizens
- ❑ Meeting attendees ranked final results

Development Issues Ranking (Top 10)

- 16.744 Victories 2
- 7.301 Purchase resort properties / condos - time shares / economic revenue
- 6.778 Prescription Drug Benefit with wholesale drug house
- 6.728 Extend the 27 county service area
- 5.583 Satellite Health Park off Reservation (Lansing)
- 5.125 Mackinaw Casino
- 4.847 Bank/Credit Union
- 4.825 Mobile Health Clinic
- 4.647 Health Center/Clinic
- 4.111 Centrally located inter-tribal information center



- Victories 2
- Purchase resort properties / condos - time shares / economic revenue
- Prescription Drug Benefit with wholesale drug house
- Extend the 27 county service area
- Satellite Health Park off Reservation (Lansing)
- Mackinaw Casino
- Bank/Credit Union
- Mobile Health Clinic
- Health Center/Clinic
- Centrally located inter-tribal information center
- Tribal construction company
- Elders meeting place
- Health Outreach Satellite Clinic
- Telecommunications company/complex
- Community Center
- Tribal Cemetery in SW Michigan
- Elderly Assisted Living Facility
- Allocate spending to create more revenue
- Wind energy complex
- Statewide chain gas station

Draft Comment Meetings

- Harbor Springs, May 6th 2005 (LTBB Administration Complex)
- Grand Rapids, May 18th 2005 (Radisson Riverfront on Ann Street)
- East Lansing, May 19th 2005 (Kellogg Center at MSU)
- Harris, May 26th 2005 (Chip-in Island Resort and Casino)

LTBB Proposed Land Acquisition Policies

- ❑ A set of policies to guide the Tribe in both land acquisition and land development
- ❑ Statements that are a set of guiding principles for decision-making
- ❑ Used with the Implementation Policies and Procedures to acquire land

Policy Examples

- “Decisions about land use and development on the LTBB Reservation will be based on area resource characteristics implemented through site-specific plans.”
- “New developments will in most cases be clustered near similar developments in the most appropriate places on the Reservation and will be consistent with local plans where possible.”

Implementation Policy Examples

- “Put into place an overall administrative structure for the vetting, cataloging, analysis, and review of proposed land purchases and acquisitions.”
- “Acquire land for the use of the Tribe that is in the best interests of the Tribe, and that follows the guidelines and ideals for land development laid out in this document.”

Land Acquisition Procedures

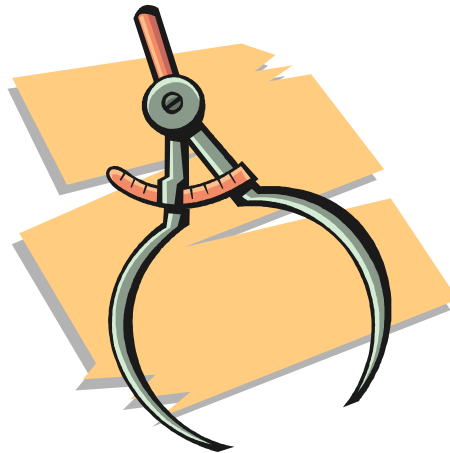
- Information Gathering
 - Basic information about the parcel
 - Brief on-site visit by staff
 - Preliminary Report from Planning/Environmental Services/GIS Departments.
- Land Development Model
 - Potential site is analyzed for development potential or development limitations score
- Tribal Council utilizes Development Matrix for final decision

Membership Comments

- ❑ Questions about tonight's information?
- ❑ General Feedback about land priorities
- ❑ Other Questions?

Conclusion

- ❑ Workable model for future land analysis
- ❑ Visual Representation of Tribal Land Acquisition policies and guidelines
- ❑ Decision Making Tool for elected leaders that reflects membership input



Chi Miigwetch for participating!

- Baa maa pii
- Additional Questions or Comments Please contact the Tribal Planner, Bryan Gillett:
Telephone: (231) 242-1580
Email: bgillett@ltbbodawa-nsn.gov